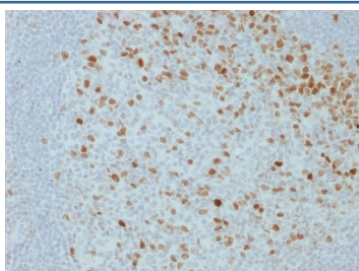


Proliferation Marker Antibody [clone JC1] (V8296)

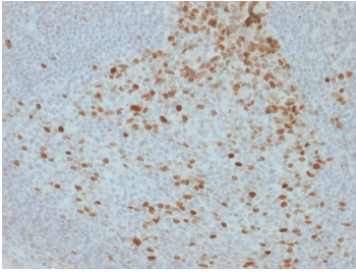
Catalog No.	Formulation	Size
V8296-100UG	0.2 mg/ml in 1X PBS with 0.1 mg/ml BSA (US sourced) and 0.05% sodium azide	100 ug
V8296-20UG	0.2 mg/ml in 1X PBS with 0.1 mg/ml BSA (US sourced) and 0.05% sodium azide	20 ug
V8296SAF-100UG	1 mg/ml in 1X PBS; BSA free, sodium azide free	100 ug

[Bulk quote request](#)

Availability	1-3 business days
Species Reactivity	Human
Format	Purified
Clonality	Monoclonal (mouse origin)
Isotype	Mouse IgG2a, kappa
Clone Name	JC1
Purity	Protein G affinity chromatography
Localization	Nuclear
Applications	Western Blot : 1-2ug/ml Immunofluorescence : 1-2ug/ml Immunohistochemistry (FFPE) : 1-2ug/ml
Limitations	This Proliferation Marker antibody is available for research use only.



IHC staining of FFPE human lymph node with Proliferation Marker antibody (clone JC1).
HIER: boil tissue sections in pH 9 10mM Tris with 1mM EDTA for 20 min and allow to cool before testing.



IHC staining of FFPE human lymph node with Proliferation Marker antibody (clone JC1).
HIER: boil tissue sections in pH 9 10mM Tris with 1mM EDTA for 20 min and allow to cool before testing.

Description

JC1 detects a nuclear antigen, distinct from Ki67, present in proliferating cells. It is useful as a marker of proliferation in cases such as squamous cell carcinoma where the Ki67 index cannot be determined.

Application Notes

Optimal dilution of the Proliferation Marker antibody should be determined by the researcher.

Immunogen

Pokeweed-stimulated lymphocytes were used as the immunogen for this Proliferation Marker antibody.

Storage

Store the Proliferation Marker antibody at 2-8°C (with azide) or aliquot and store at -20°C or colder (without azide).