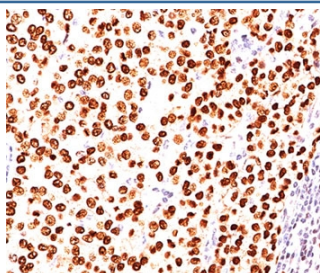


Progesterone Receptor Antibody [clone PR484] (V2224)

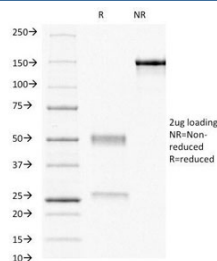
Catalog No.	Formulation	Size
V2224-100UG	0.2 mg/ml in 1X PBS with 0.1 mg/ml BSA (US sourced) and 0.05% sodium azide	100 ug
V2224-20UG	0.2 mg/ml in 1X PBS with 0.1 mg/ml BSA (US sourced) and 0.05% sodium azide	20 ug
V2224SAF-100UG	1 mg/ml in 1X PBS; BSA free, sodium azide free	100 ug
V2224IHC-7ML	Prediluted in 1X PBS with 0.1 mg/ml BSA (US sourced) and 0.05% sodium azide; *For IHC use only*	7 ml

[Bulk quote request](#)

Species Reactivity	Human
Format	Purified
Host	Mouse
Clonality	Monoclonal (mouse origin)
Isotype	Mouse IgG1, kappa
Clone Name	PR484
Purity	Protein G affinity chromatography
Buffer	1X PBS, pH 7.4
Gene ID	5241
Localization	Nuclear, cytoplasmic
Applications	Immunohistochemistry (FFPE) : 1-2ug/ml for 30 min at RT
Limitations	This Progesterone Receptor antibody is available for research use only.



IHC testing of FFPE human breast carcinoma stained with Progesterone Receptor antibody (clone PR484).



SDS-PAGE Analysis of Purified, BSA-Free Progesterone Receptor Antibody (clone PR484). Confirmation of Integrity and Purity of the Antibody.

Description

This antibody is specific to progesterone receptor and shows minimal cross-reaction with other members of the family. Progesterone receptor is expressed as two major isoforms, PR-A (81kDa) and PR-B (116kDa). Expression of progesterone receptor has been suggested to reflect a intact estrogen regulatory machinery and therefore predict better clinical response to endocrine therapy than ER alone. This progesterone receptor antibody is excellent for immunohistochemical staining of formalin/paraffin tissues.

Application Notes

The concentration stated for each application is a general starting point. Variations in protocols, secondaries and substrates may require the Progesterone Receptor antibody to be titrated up or down for optimal performance.

1. Staining of formalin-fixed tissues requires boiling tissue sections in pH 9 10mM Tris with 1mM EDTA for 10-20 min followed by cooling at RT for 20 minutes.
2. The prediluted format is supplied in a dropper bottle and is optimized for use in IHC. After epitope retrieval step (if required), drip mAb solution onto the tissue section and incubate at RT for 30 min.

Immunogen

Recombinant human protein was used as the immunogen for this Progesterone Receptor antibody.

Storage

Store the Progesterone Receptor antibody at 2-8oC (with azide) or aliquot and store at -20oC or colder (without azide).

Alternate Names

NR3C3, Nuclear recepтр subfamily 3 group C member 3, PGR, PR, PRA, PRB, Progesterone receptor antibody

References (2)