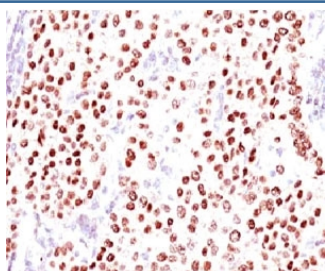


Progesterone Receptor Antibody [clone PGSR17] (V7038)

Catalog No.	Formulation	Size
V7038-100UG	0.2 mg/ml in 1X PBS with 0.1 mg/ml BSA (US sourced) and 0.05% sodium azide	100 ug
V7038-20UG	0.2 mg/ml in 1X PBS with 0.1 mg/ml BSA (US sourced) and 0.05% sodium azide	20 ug
V7038SAF-100UG	1 mg/ml in 1X PBS; BSA free, sodium azide free	100 ug
V7038IHC-7ML	Prediluted in 1X PBS with 0.1 mg/ml BSA (US sourced) and 0.05% sodium azide; *For IHC use only*	7 ml

[Bulk quote request](#)

Species Reactivity	Human
Format	Purified
Host	Mouse
Clonality	Monoclonal (mouse origin)
Isotype	Mouse IgG1, kappa
Clone Name	PGSR17
Purity	Protein G affinity chromatography
Buffer	1X PBS, pH 7.4
Gene ID	5241
Localization	Nuclear, cytoplasmic
Applications	Immunohistochemistry (FFPE) : 1-2ug/ml for 30 min at RT Prediluted IHC Only Format : incubate for 30 min at RT (1)
Limitations	This Progesterone Receptor antibody is available for research use only.



IHC testing of FFPE human breast carcinoma with Progesterone Receptor antibody (clone PGSR17). Required HIER: boil tissue sections in pH 9 10mM Tris with 1mM EDTA for 10-20 min followed by cooling at RT for 20 minutes.

Description

Progesterone receptor is expressed as two major isoforms, PR-A (81kDa) and PR-B (116kDa). Expression of progesterone receptor has been suggested to reflect a intact estrogen regulatory machinery and therefore predict better clinical response to endocrine therapy than ER alone.

Application Notes

The concentration stated for each application is a general starting point. Variations in protocols, secondaries and substrates may require the Progesterone Receptor antibody to be titrated up or down for optimal performance.

1. The prediluted format is supplied in a dropper bottle and is optimized for use in IHC. After epitope retrieval step (if required), drip mAb solution onto the tissue section and incubate at RT for 30 min.

Immunogen

Recombinant human Progesterone Receptor protein was used as the immunogen for this antibody.

Storage

Store the Progesterone Receptor antibody at 2-8oC (with azide) or aliquot and store at -20oC or colder (without azide).