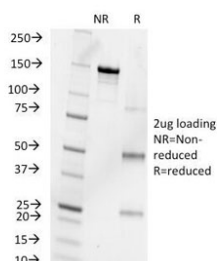


## Progesterone Antibody [clone 6-5E-10B] (V3090)

Catalog No.	Formulation	Size
V3090-100UG	0.2 mg/ml in 1X PBS with 0.1 mg/ml BSA (US sourced) and 0.05% sodium azide	100 ug
V3090-20UG	0.2 mg/ml in 1X PBS with 0.1 mg/ml BSA (US sourced) and 0.05% sodium azide	20 ug
V3090SAF-100UG	1 mg/ml in 1X PBS; BSA free, sodium azide free	100 ug

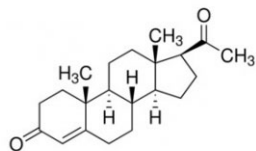
[Bulk quote request](#)

<b>Availability</b>	1-3 business days
<b>Species Reactivity</b>	All species
<b>Format</b>	Purified
<b>Host</b>	Mouse
<b>Clonality</b>	Monoclonal (mouse origin)
<b>Isotype</b>	Mouse IgG1, kappa
<b>Clone Name</b>	6-5E-10B
<b>Purity</b>	Protein G affinity chromatography
<b>UniProt</b>	Not Applicable
<b>Localization</b>	Secreted and cytoplasmic
<b>Applications</b>	ELISA (order BSA/sodium Azide-free Format For Coating) : Immunohistochemistry : not tested Radioimmunoassay (RIA) :
<b>Limitations</b>	This Progesterone antibody is available for research use only.



SDS-PAGE Analysis of Purified, BSA-Free Progesterone Antibody (clone 6-5E-10B). Confirmation of Integrity and Purity of the Antibody.

#### Molecular Structure of Progesterone



## Description

This mAb is specific for progesterone. It exhibits minimal cross reactivity with related compounds in ELISA. It reacts with Progesterone-11a-HMS-BSA: 100%; 5-beta-Pregnane-3,20-dione: 48%; 5-alpha-Pregnane-3,20-dione: 26.4%; 17-alpha-Hydroxyprogesterone: 2.5% and 20-alpha-Hydroxyprogesterone: 0.04%. Progesterone is a steroid hormone synthesized from the cholesterol derivative, pregnenolone, in the cortex of the adrenal gland. Progesterone is secreted by the corpus luteum and acts to prepare the endometrium for the implantation of a fertilized egg. During pregnancy, it is secreted by the placenta to prevent spontaneous abortion and to stimulate the development of mammary tissue to produce milk. Thus, progesterone plays a central role in the reproductive events associated with the establishment and maintenance of pregnancy. Luteinized theca cells of normal ovary secrete progesterone. The determination of progesterone concentrations in the body fluids is of great value for endocrinological investigations in women. This mAb may prove useful in identification of ovarian tumors.

## Application Notes

Optimal dilution of the Progesterone antibody should be determined by the researcher.

## Immunogen

Progesterone- 11a-hemisuccinate conjugated to bovine serum albumin (Pr11a-HMS-BSA) was used as the immunogen for the Progesterone antibody.

## Storage

Store the Progesterone antibody at 2-8oC (with azide) or aliquot and store at -20oC or colder (without azide).