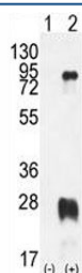


## PRMT7 Antibody (F40475)

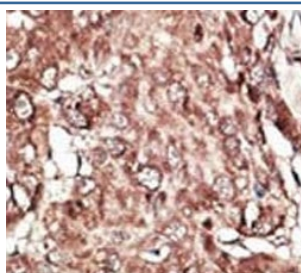
Catalog No.	Formulation	Size
F40475-0.4ML	In 1X PBS, pH 7.4, with 0.09% sodium azide	0.4 ml
F40475-0.08ML	In 1X PBS, pH 7.4, with 0.09% sodium azide	0.08 ml

[Bulk quote request](#)

<b>Availability</b>	1-3 business days
<b>Species Reactivity</b>	Human
<b>Format</b>	Purified
<b>Host</b>	Rabbit
<b>Clonality</b>	Polyclonal (rabbit origin)
<b>Isotype</b>	Rabbit Ig
<b>Purity</b>	Purified
<b>UniProt</b>	Q9NVM4
<b>Applications</b>	Western Blot : 1:1000 IHC (Paraffin) : 1:50-1:100
<b>Limitations</b>	This PRMT7 antibody is available for research use only.



Western blot analysis of PRMT7 antibody and 293 cell lysate either nontransfected (Lane 1) or transiently transfected with the PRMT7 gene (2).



IHC analysis of FFPE human hepatocarcinoma stained with the PRMT7 antibody

## Description

Arginine methylation is an irreversible post translational modification which has only recently been linked to protein activity. At least three types of PRMT enzymes have been identified in mammalian cells. These enzymes have been shown to have essential regulatory functions by methylation of key proteins in several fundamental areas. These proteins include nuclear proteins, IL enhancer binding factor, nuclear factors, cell cycle proteins, signal transduction proteins, apoptosis proteins, and viral proteins. The mammalian PRMT family currently consists of 7 members that share two large domains of homology. Outside of these domains, epitopes were identified and antibodies against all 7 PRMT members have been developed.

## Application Notes

Titration of the PRMT7 antibody may be required due to differences in protocols and secondary/substrate sensitivity.

## Immunogen

A portion of amino acids 1-30 from the human protein was used as the immunogen for this PRMT7 antibody.

## Storage

Aliquot the PRMT7 antibody and store frozen at -20oC or colder. Avoid repeated freeze-thaw cycles.