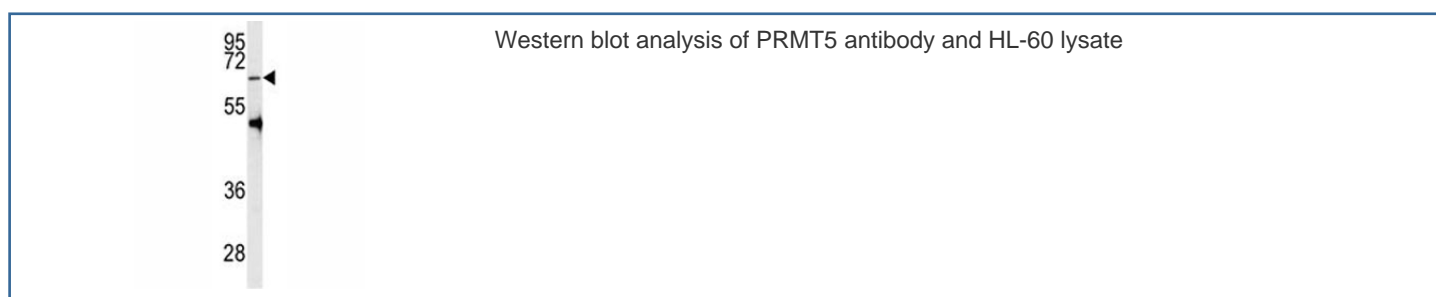


## PRMT5 Antibody (F40460)

| Catalog No.   | Formulation                                | Size    |
|---------------|--|---------|
| F40460-0.4ML  | In 1X PBS, pH 7.4, with 0.09% sodium azide | 0.4 ml  |
| F40460-0.08ML | In 1X PBS, pH 7.4, with 0.09% sodium azide | 0.08 ml |

[Bulk quote request](#)

|                             |   |
|-----------------------------|---|
| <b>Availability</b>         | 1-3 business days                                       |
| <b>Species Reactivity</b>   | Human   |
| <b>Predicted Reactivity</b> | Mouse, Bovine, Primate, Xenopus                         |
| <b>Format</b>               | Purified  |
| <b>Host</b>                 | Rabbit  |
| <b>Clonality</b>            | Polyclonal (rabbit origin)                              |
| <b>Isotype</b>              | Rabbit Ig   |
| <b>Purity</b>               | Purified  |
| <b>UniProt</b>              | O14744  |
| <b>Applications</b>         | Western Blot : 1:1000                                   |
| <b>Limitations</b>          | This PRMT5 antibody is available for research use only. |



## Description

Arginine methylation is an irreversible post translational modification which has only recently been linked to protein activity. At least three types of PRMT enzymes have been identified in mammalian cells. These enzymes have been shown to have essential regulatory functions by methylation of key proteins in several fundamental areas. These protein include nuclear proteins, IL enhancer binding factor, nuclear factors, cell cycle proteins, signal transduction proteins, apoptosis proteins, and viral proteins. The mammalian PRMT family currently consists of 7 members that share two large

domains of homology. Outside of these domains, epitopes were identified and antibodies against all 7 PRMT members have been developed.

## **Application Notes**

Titration of the PRMT5 antibody may be required due to differences in protocols and secondary/substrate sensitivity.

## **Immunogen**

A portion of amino acids 473-499 from the human protein was used as the immunogen for this PRMT5 antibody.

## **Storage**

Aliquot the PRMT5 antibody and store frozen at -20oC or colder. Avoid repeated freeze-thaw cycles.