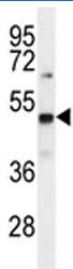


PRMT1 Antibody (F40435)

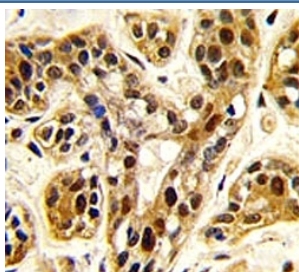
Catalog No.	Formulation	Size
F40435-0.4ML	In 1X PBS, pH 7.4, with 0.09% sodium azide	0.4 ml
F40435-0.08ML	In 1X PBS, pH 7.4, with 0.09% sodium azide	0.08 ml

[Bulk quote request](#)

Availability	1-3 business days
Species Reactivity	Human, Mouse
Predicted Reactivity	Rat
Format	Purified
Host	Rabbit
Clonality	Polyclonal (rabbit origin)
Isotype	Rabbit Ig
Purity	Purified
UniProt	Q99873
Applications	Western Blot : 1:1000 IHC (Paraffin) : 1:10-1:50
Limitations	This PRMT1 antibody is available for research use only.



PRMT1 antibody western blot analysis in mouse Neuro-2a lysate



IHC analysis of FFPE human breast carcinoma tissue stained with PRMT1 antibody

Description

Arginine methylation is an irreversible post translational modification which has only recently been linked to protein activity. At least three types of PRMT enzymes have been identified in mammalian cells. These enzymes have been shown to have essential regulatory functions by methylation of key proteins in several fundamental areas. These proteins include nuclear proteins, IL enhancer binding factor, nuclear factors, cell cycle proteins, signal transduction proteins, apoptosis proteins, and viral proteins. The mammalian PRMT family currently consists of 7 members that share two large domains of homology.

Application Notes

Titration of the PRMT1 antibody may be required due to differences in protocols and secondary/substrate sensitivity.

Immunogen

A portion of amino acids 317-346 from the human protein was used as the immunogen for this PRMT1 antibody.

Storage

Aliquot the PRMT1 antibody and store frozen at -20oC or colder. Avoid repeated freeze-thaw cycles.