

PREX1 Antibody (F54365)

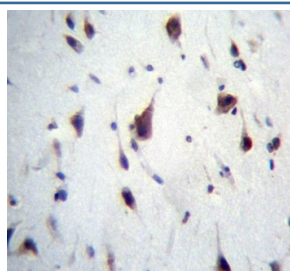
Catalog No.	Formulation	Size
F54365-0.4ML	In 1X PBS, pH 7.4, with 0.09% sodium azide	0.4 ml
F54365-0.08ML	In 1X PBS, pH 7.4, with 0.09% sodium azide	0.08 ml

[Bulk quote request](#)

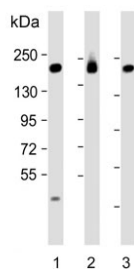
Availability	1-3 business days
Species Reactivity	Human
Format	Purified
Host	Rabbit
Clonality	Polyclonal (rabbit origin)
Isotype	Rabbit Ig
Purity	Antigen affinity purified
UniProt	Q8TCU6
Applications	Immunohistochemistry (FFPE) : 1:25 Western Blot : 1:500-1:2000 Flow Cytometry : 1:25 (1x10 ⁶ cells)
Limitations	This PREX1 antibody is available for research use only.



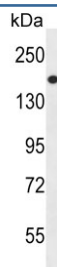
IHC testing of FFPE human brain tissue with PREX1 antibody. HIER: steam section in pH6 citrate buffer for 20 min and allow to cool prior to staining.



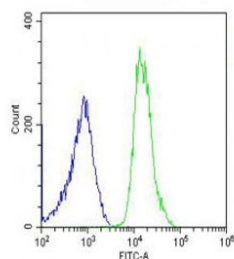
IHC testing of FFPE human brain tissue with PREX1 antibody. HIER: steam section in pH6 citrate buffer for 20 min and allow to cool prior to staining.



Western blot testing of human 1) MCF7, 2) SK-BR-3 and 3) ThP1 cell lysate with PREX1 antibody. Predicted molecular weight ~186 kDa.



Western blot testing of human NCI-H460 cell lysate with PREX1 antibody. Predicted molecular weight ~186 kDa.



Flow cytometry testing of fixed and permeabilized human U-2 OS cells with PREX1 antibody; Blue=isotype control, Green= PREX1 antibody.

Description

The protein encoded by this gene acts as a guanine nucleotide exchange factor for the RHO family of small GTP-binding proteins (RACs). It has been shown to bind to and activate RAC1 by exchanging bound GDP for free GTP. The encoded protein, which is found mainly in the cytoplasm, is activated by phosphatidylinositol-3,4,5-trisphosphate and the beta-gamma subunits of heterotrimeric G proteins.

Application Notes

The stated application concentrations are suggested starting points. Titration of the PREX1 antibody may be required due to differences in protocols and secondary/substrate sensitivity.

Immunogen

A portion of amino acids 1134-1163 from the human protein was used as the immunogen for the PREX1 antibody.

Storage

Aliquot the PREX1 antibody and store frozen at -20oC or colder. Avoid repeated freeze-thaw cycles.

