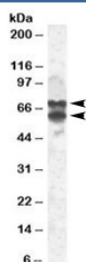


## PPP2R5D Antibody (R34606)

Catalog No.	Formulation	Size
R34606-100UG	0.5 mg/ml in 1X TBS, pH7.3, with 0.5% BSA (US sourced) and 0.02% sodium azide	100 ug

[Bulk quote request](#)

Availability	1-3 business days
Species Reactivity	Human
Predicted Reactivity	Cow, Dog, Mouse, Pig, Rat
Format	Antigen affinity purified
Clonality	Polyclonal (goat origin)
Isotype	Goat Ig
Purity	Antigen affinity
Gene ID	5528
Applications	Western Blot : 1-3ug/ml ELISA (peptide) LOD : 1:20000
Limitations	This PPP2R5D antibody is available for research use only.



Western blot testing of 293 lysate with PPP2R5D antibody at 2ug/ml. Image shows isoforms of ~70kDa and ~60kDa.

## Description

Additional name(s) for this target protein: Protein phosphatase 2, regulatory subunit B (B56), delta

## Application Notes

Optimal dilution of the PPP2R5D antibody should be determined by the researcher.

## Immunogen

Amino acids KRAEEFLTASQEAL were used as the immunogen for this PPP2R5D antibody.

## **Storage**

Aliquot and store the PPP2R5D antibody at -20oC.