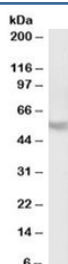


## PPP2R5B Antibody (R35434)

Catalog No.	Formulation	Size
R35434-100UG	0.5 mg/ml in 1X TBS, pH7.3, with 0.5% BSA (US sourced) and 0.02% sodium azide	100 ug

[Bulk quote request](#)

Availability	1-3 business days
Species Reactivity	Human
Format	Antigen affinity purified
Clonality	Polyclonal (goat origin)
Isotype	Goat Ig
Purity	Antigen affinity
Gene ID	5526
Applications	Western Blot : 2-3ug/ml ELISA (peptide) LOD : 1:2000
Limitations	This PPP2R5B antibody is available for research use only.



Western blot testing of human cerebellum lysate with PPP2R5B antibody at 2ug/ml.  
Predicted molecular weight: ~57kDa.

## Description

Additional name(s) for this target protein: Protein phosphatase 2 regulatory subunit B (B56) beta isoform; PP2A B subunit isoform R5-beta; Serine/threonine-protein phosphatase 2A 56 kDa regulatory subunit beta isoform

## Application Notes

Optimal dilution of the PPP2R5B antibody should be determined by the researcher.

## Immunogen

Amino acids QRLTPQVAASGGQS were used as the immunogen for this PPP2R5B antibody.

## **Storage**

Aliquot and store the PPP2R5B antibody at -20oC.