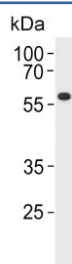


PPP2R2A Antibody (F54737)

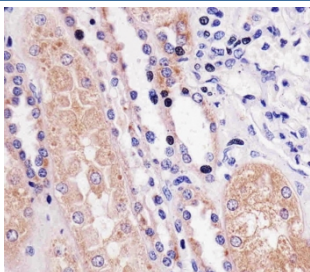
Catalog No.	Formulation	Size
F54737-0.4ML	In 1X PBS, pH 7.4, with 0.09% sodium azide	0.4 ml
F54737-0.08ML	In 1X PBS, pH 7.4, with 0.09% sodium azide	0.08 ml

[Bulk quote request](#)

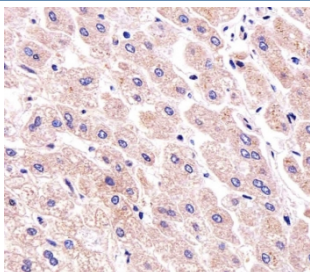
Availability	1-3 business days
Species Reactivity	Human
Format	Purified
Host	Rabbit
Clonality	Polyclonal (rabbit origin)
Isotype	Rabbit Ig
Purity	Antigen affinity purified
UniProt	P63151
Localization	Nuclear, cytoplasmic
Applications	Immunohistochemistry (FFPE) : 1:25 Immunofluorescence : 1:25 Western Blot : 1:500-1:1000
Limitations	This PPP2R2A antibody is available for research use only.



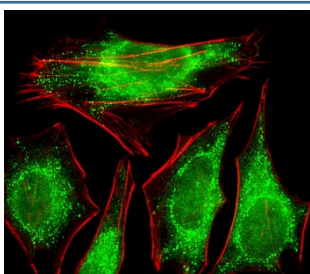
Western blot testing of human ZR-75-1 cell lysate with PPP2R2A antibody. Predicted molecular weight ~52 kDa.



IHC testing of FFPE human kidney tissue with PPP2R2A antibody. HIER: steam section in pH6 citrate buffer for 20 min and allow to cool prior to staining.



IHC testing of FFPE human liver tissue with PPP2R2A antibody. HIER: steam section in pH6 citrate buffer for 20 min and allow to cool prior to staining.



Immunofluorescent staining of human HeLa cells with PPP2R2A antibody (green) and anti-Actin (red).

Description

The B regulatory subunit might modulate substrate selectivity and catalytic activity, and also might direct the localization of the catalytic enzyme to a particular subcellular compartment.

Application Notes

The stated application concentrations are suggested starting points. Titration of the PPP2R2A antibody may be required due to differences in protocols and secondary/substrate sensitivity.

Immunogen

A portion of amino acids 43-71 from the human protein was used as the immunogen for the PPP2R2A antibody.

Storage

Aliquot the PPP2R2A antibody and store frozen at -20oC or colder. Avoid repeated freeze-thaw cycles.