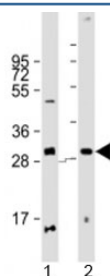


PPP1R3E Antibody (F53985)

Catalog No.	Formulation	Size
F53985-0.2ML	In 1X PBS, pH 7.4, with 0.09% sodium azide	0.2 ml
F53985-0.05ML	In 1X PBS, pH 7.4, with 0.09% sodium azide	0.05 ml

[Bulk quote request](#)

Availability	1-3 business days
Species Reactivity	Human
Format	Antigen affinity purified
Host	Rabbit
Clonality	Polyclonal (rabbit origin)
Isotype	Rabbit Ig
Purity	Antigen affinity
UniProt	Q9H7J1
Applications	Western Blot : 1:1000-2000
Limitations	This PPP1R3E antibody is available for research use only.



Western blot testing of human 1) pancreas and 2) placenta lysate with PPP1R3E antibody at 1:2000. Predicted molecular weight: 31 kDa.

Description

Protein phosphatase 1 regulatory subunit 3E acts as a glycogen-targeting subunit for PP1. PP1 is involved in glycogen metabolism and contributes to the activation of glycogen synthase leading to an increase in glycogen synthesis.

Application Notes

Titration of the PPP1R3E antibody may be required due to differences in protocols and secondary/substrate sensitivity.

Immunogen

A portion of amino acids 159-192 from the human protein was used as the immunogen for the PPP1R3E antibody.

Storage

Aliquot the PPP1R3E antibody and store frozen at -20oC or colder. Avoid repeated freeze-thaw cycles.