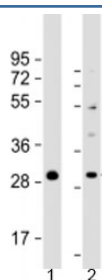


PPAPDC1B Antibody / PLPP5 (F53929)

Catalog No.	Formulation	Size
F53929-0.05ML	In 1X PBS, pH 7.4, with 0.09% sodium azide	0.05 ml

Bulk quote request

Availability	1-3 business days
Species Reactivity	Human
Format	Antigen affinity purified
Clonality	Polyclonal (rabbit origin)
Isotype	Rabbit Ig
Purity	Antigen affinity
UniProt	Q8NEB5
Applications	Western Blot : 1:1000-2000
Limitations	This PPAPDC1B antibody is available for research use only.



Western blot testing of human 1) RPMI 8226 and 2) SH-SY5Y cell lysate with PPAPDC1B antibody at 1:2000. Predicted molecular weight: 29 kDa.

Description

Phosphatidic acid phosphatase type 2 domain-containing protein 1B or Phospholipid phosphatase 5 displays magnesium-independent phosphatidate phosphatase activity in vitro. Catalyzes the conversion of phosphatidic acid to diacylglycerol. May be a metastatic suppressor for hepatocellular carcinoma.

Application Notes

Titration of the PPAPDC1B antibody may be required due to differences in protocols and secondary/substrate sensitivity.

Immunogen

A portion of amino acids 114-146 from the human protein was used as the immunogen for the PPAPDC1B antibody.

Storage

Aliquot the PPAPDC1B antibody and store frozen at -20oC or colder. Avoid repeated freeze-thaw cycles.