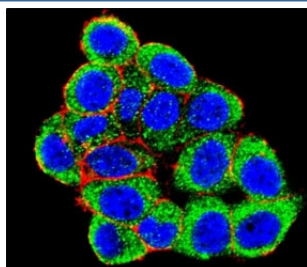


PML Antibody (F48066)

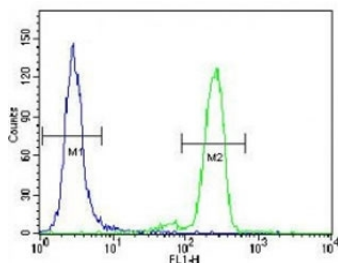
Catalog No.	Formulation	Size
F48066-0.4ML	In 1X PBS, pH 7.4, with 0.09% sodium azide	0.4 ml
F48066-0.08ML	In 1X PBS, pH 7.4, with 0.09% sodium azide	0.08 ml

[Bulk quote request](#)

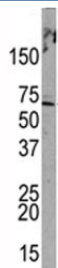
Availability	1-3 business days
Species Reactivity	Human
Format	Antigen affinity purified
Clonality	Polyclonal (rabbit origin)
Isotype	Rabbit Ig
Purity	Antigen affinity
UniProt	P29590
Localization	Nuclear, cytoplasmic (isoform dependent)
Applications	Western Blot : 1:1000 IHC (Paraffin) : 1:50-1:100 Immunofluorescence : 1:10-1:50 Flow Cytometry : 1:10-1:50
Limitations	This PML antibody is available for research use only.



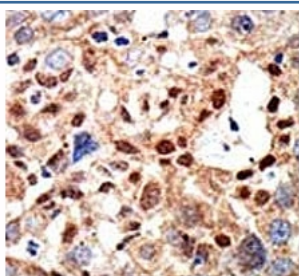
Confocal immunofluorescent analysis of PML antibody with HeLa cells followed by Alexa Fluor 488-conjugated goat anti-rabbit IgG (green). Actin filaments have been labeled with Alexa Fluor 555 Phalloidin (red). DAPI was used as a nuclear counterstain (blue).



PML antibody flow cytometric analysis of HeLa cells (right histogram) compared to a negative control (left histogram). FITC-conjugated goat-anti-rabbit secondary Ab was used for the analysis.



Western blot analysis of PML antibody and HeLa lysate. There are multiple isoforms from 47-97 kDa.



IHC analysis of FFPE human hepatocarcinoma tissue stained with the PML antibody

Description

PML is a member of the tripartite motif (TRIM) family. The TRIM motif includes three zinc-binding domains, a RING, a B-box type 1 and a B-box type 2, and a coiled-coil region. This phosphoprotein localizes to nuclear bodies where it functions as a transcription factor and tumor suppressor. Its expression is cell-cycle related and it regulates the p53 response to oncogenic signals. The gene is often involved in the translocation with the retinoic acid receptor alpha gene associated with acute promyelocytic leukemia (APL).

Application Notes

Titration of the PML antibody may be required due to differences in protocols and secondary/substrate sensitivity.

Immunogen

A portion of amino acids 470-499 (sumoylation site) from the human protein was used as the immunogen for this PML antibody.

Storage

Aliquot the PML antibody and store frozen at -20oC or colder. Avoid repeated freeze-thaw cycles.

