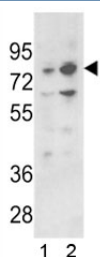


## PLZF Antibody (F49772)

Catalog No.	Formulation	Size
F49772-0.4ML	In 1X PBS, pH 7.4, with 0.09% sodium azide	0.4 ml
F49772-0.08ML	In 1X PBS, pH 7.4, with 0.09% sodium azide	0.08 ml

[Bulk quote request](#)

<b>Availability</b>	1-3 business days
<b>Species Reactivity</b>	Human
<b>Format</b>	Purified
<b>Clonality</b>	Polyclonal (rabbit origin)
<b>Isotype</b>	Rabbit Ig
<b>Purity</b>	Purified
<b>UniProt</b>	Q05516
<b>Applications</b>	Western Blot : 1:1000
<b>Limitations</b>	This PLZF antibody is available for research use only.



Western blot analysis of PLZF antibody and 1) 293 and 2) K562 lysate. Predicted molecular weight: 74-81 kDa.

## Description

PLZF is a member of the Krueppel C2H2-type zinc-finger protein family and a zinc finger transcription factor that contains nine Kruppel-type zinc finger domains at the carboxyl terminus. This protein is located in the nucleus, is involved in cell cycle progression, and interacts with a histone deacetylase. Specific instances of aberrant gene rearrangement at this locus have been associated with acute promyelocytic leukemia (APL).

## Application Notes

Titration of the PLZF antibody may be required due to differences in protocols and secondary/substrate sensitivity.

## Immunogen

A portion of amino acids 637-666 from the human protein was used as the immunogen for this PLZF antibody.

## Storage

Aliquot the PLZF antibody and store frozen at -20oC or colder. Avoid repeated freeze-thaw cycles.