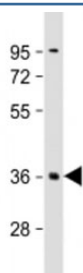


## PLK5 Antibody / Polo-like kinase 5 (F53881)

| Catalog No.   | Formulation                                | Size    |
|---------------|--|---------|
| F53881-0.2ML  | In 1X PBS, pH 7.4, with 0.09% sodium azide | 0.2 ml  |
| F53881-0.05ML | In 1X PBS, pH 7.4, with 0.09% sodium azide | 0.05 ml |

[Bulk quote request](#)

|                           |  |
|---------------------------|--|
| <b>Availability</b>       | 1-3 business days                                      |
| <b>Species Reactivity</b> | Human  |
| <b>Format</b>             | Antigen affinity purified                              |
| <b>Host</b>               | Rabbit   |
| <b>Clonality</b>          | Polyclonal (rabbit origin)                             |
| <b>Isotype</b>            | Rabbit Ig  |
| <b>Purity</b>             | Antigen affinity                                       |
| <b>UniProt</b>            | Q496M5   |
| <b>Applications</b>       | Western Blot : 1:1000-2000                             |
| <b>Limitations</b>        | This PLK5 antibody is available for research use only. |



Western blot testing of human brain lysate with PLK5 antibody at 1:2000. Predicted molecular weight: 37 kDa.

### Description

Polo-like kinase 5 is an inactive serine/threonine-protein kinase that plays a role in cell cycle progression and neuronal differentiation.

### Application Notes

Titration of the PLK5 antibody may be required due to differences in protocols and secondary/substrate sensitivity.

## **Immunogen**

A portion of amino acids 140-174 from the human protein was used as the immunogen for the PLK5 antibody.

## **Storage**

Aliquot the PLK5 antibody and store frozen at -20°C or colder. Avoid repeated freeze-thaw cycles.