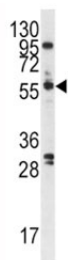


PLK1 Antibody (F50901)

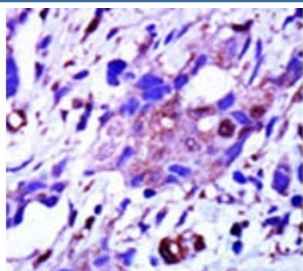
Catalog No.	Formulation	Size
F50901-0.4ML	In 1X PBS, pH 7.4, with 0.09% sodium azide	0.4 ml
F50901-0.08ML	In 1X PBS, pH 7.4, with 0.09% sodium azide	0.08 ml

[Bulk quote request](#)

Availability	1-3 business days
Species Reactivity	Human
Predicted Reactivity	Mouse
Format	Purified
Clonality	Polyclonal (rabbit origin)
Isotype	Rabbit Ig
Purity	Purified
UniProt	P53350
Applications	Western Blot : 1:1000 IHC (Paraffin) : 1:50-1:100
Limitations	This PLK1 antibody is available for research use only.



Western blot analysis of PLK1 antibody and A375 cell lysate.



IHC analysis of FFPE human breast carcinoma tissue stained with the PLK1 antibody

Description

Protein kinases are enzymes that transfer a phosphate group from a phosphate donor, generally the γ phosphate of ATP, onto an acceptor amino acid in a substrate protein. By this basic mechanism, protein kinases mediate most of the signal transduction in eukaryotic cells, regulating cellular metabolism, transcription, cell cycle progression, cytoskeletal rearrangement and cell movement, apoptosis, and differentiation. With more than 500 gene products, the protein kinase family is one of the largest families of proteins in eukaryotes. The family has been classified in 8 major groups based on sequence comparison of their tyrosine (PTK) or serine/threonine (STK) kinase catalytic domains.

Application Notes

Titration of the PLK1 antibody may be required due to differences in protocols and secondary/substrate sensitivity.

Immunogen

A portion of amino acids 573-603 from the human protein was used as the immunogen for this PLK1 antibody.

Storage

Aliquot the PLK1 antibody and store frozen at -20°C or colder. Avoid repeated freeze-thaw cycles.