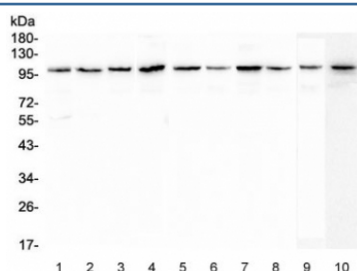


## Plasminogen Antibody / PLG (RQ4670)

Catalog No.	Formulation	Size
RQ4670	0.5mg/ml if reconstituted with 0.2ml sterile DI water	100 ug

**Bulk quote request**

<b>Availability</b>	1-3 business days
<b>Species Reactivity</b>	Human, Mouse, Rat
<b>Format</b>	Antigen affinity purified
<b>Host</b>	Rabbit
<b>Clonality</b>	Polyclonal (rabbit origin)
<b>Isotype</b>	Rabbit IgG
<b>Purity</b>	Antigen affinity purified
<b>Buffer</b>	Lyophilized from 1X PBS with 2% Trehalose and 0.025% sodium azide
<b>UniProt</b>	P00747
<b>Applications</b>	Western Blot : 0.5-1ug/ml



Western blot testing of human 1) placenta, 2) HL-60, 3) 22RV1, 4) 293T, 5) PANC-1, 6) SGC-7901, 7) Caco-2, 8) PC-3, 9) rat brain and 10) mouse brain lysate with Plasminogen antibody at 0.5ug/ml. Predicted molecular weight ~92 kDa, may be observed at higher molecular weights due to glycosylation.

## Description

Plasminogen (PLG) is a circulating zymogen that is converted to the active enzyme plasmin by cleavage of the peptide bond between arg-560 and val-561, which is mediated by urokinase (PLAU) and tissue plasminogen activator (PLAT). The main function of plasmin is to dissolve fibrin (see, e.g., FGA) clots. Plasmin, like trypsin, belongs to the family of serine proteinases. Defects in this gene are likely a cause of thrombophilia and ligeneous conjunctivitis.

## Application Notes

Optimal dilution of the Plasminogen antibody should be determined by the researcher.

## Immunogen

Amino acids EPLDDYVNTQGASLFSVTKKQL were used as the immunogen for the Plasminogen antibody.

## Storage

After reconstitution, the Plasminogen antibody can be stored for up to one month at 4oC. For long-term, aliquot and store at -20oC. Avoid repeated freezing and thawing.