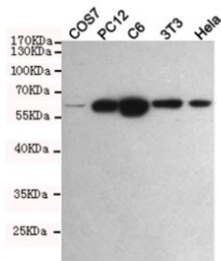


## PKM2 Antibody [clone 1A7-G6-H6] (F54017)

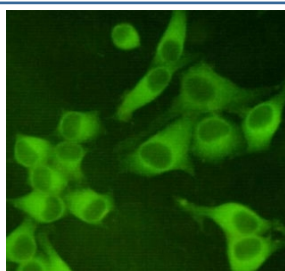
Catalog No.	Formulation	Size
F54017-0.1ML	In PBS with 50% glycerol and 0.03% ProClin 300	0.1 ml

**Bulk quote request**

<b>Availability</b>	1-3 business days
<b>Species Reactivity</b>	Human, Mouse, Rat, Primate
<b>Format</b>	Purified
<b>Clonality</b>	Monoclonal (mouse origin)
<b>Isotype</b>	Mouse IgG1
<b>Clone Name</b>	1A7-G6-H6
<b>Purity</b>	Protein G affinity
<b>UniProt</b>	P14618
<b>Applications</b>	Western Blot : 1:1000 ICC/IF : 1:400
<b>Limitations</b>	This PKM2 antibody is available for research use only.



Western blot testing of monkey COS7, rat PC12, rat C6, mouse NIH3T3 and human HeLa cell lysates with PKM2 antibody at 1:1000. Predicted molecular weight ~58 KDa.



ICC/IF staining of HeLa cells, fixed with 4% Paraformaldehyde, using PKM2 antibody at 1:400.

## Description

Glycolytic enzyme that catalyzes the transfer of a phosphoryl group from phosphoenolpyruvate (PEP) to ADP, generating ATP. Stimulates POU5F1-mediated transcriptional activation. Plays a general role in caspase independent cell death of tumor cells. The ratio between the highly active tetrameric form and nearly inactive dimeric form determines whether glucose carbons are channeled to biosynthetic processes or used for glycolytic ATP production. The transition between the 2 forms contributes to the control of glycolysis and is important for tumor cell proliferation and survival. [UniProt]

## Application Notes

The stated application concentrations are suggested starting points. Titration of the PKM2 antibody may be required due to differences in protocols and secondary/substrate sensitivity.

## Immunogen

A human recombinant partial protein was used as the immunogen for this PKM2 antibody.

## Storage

Store the PKM2 antibody at -20oC.