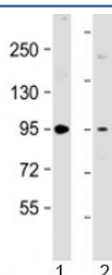


PKD2 Antibody / Protein kinase D2 (F53969)

Catalog No.	Formulation	Size
F53969-0.2ML	In 1X PBS, pH 7.4, with 0.09% sodium azide	0.2 ml
F53969-0.05ML	In 1X PBS, pH 7.4, with 0.09% sodium azide	0.05 ml

Bulk quote request

Availability	1-3 business days
Species Reactivity	Human, Mouse
Predicted Reactivity	Rat
Format	Antigen affinity purified
Clonality	Polyclonal (rabbit origin)
Isotype	Rabbit Ig
Purity	Antigen affinity
UniProt	Q9BZL6
Applications	Western Blot : 1:500-2000
Limitations	This PKD2 antibody is available for research use only.



Western blot testing of 1) human brain lysate and 2) mouse NIH3T3 cell lysate with PKD2 antibody at 1:2000. Predicted molecular weight: 97 kDa.

Description

Protein kinase D2 is a serine/threonine-protein kinase that converts transient diacylglycerol (DAG) signals into prolonged physiological effects downstream of PKC, and is involved in the regulation of cell proliferation via MAPK1/3 (ERK1/2) signaling, oxidative stress- induced NF-kappa-B activation, inhibition of HDAC7 transcriptional repression, signaling downstream of T-cell antigen receptor (TCR) and cytokine production, and plays a role in Golgi membrane trafficking, angiogenesis, secretory granule release and cell adhesion.

Application Notes

Titration of the PKD2 antibody may be required due to differences in protocols and secondary/substrate sensitivity.

Immunogen

A portion of amino acids 556-590 from the human protein was used as the immunogen for the PKD2 antibody.

Storage

Aliquot the PKD2 antibody and store frozen at -20oC or colder. Avoid repeated freeze-thaw cycles.