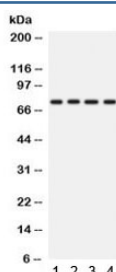


PKC eta Antibody / PRKCH (R32029)

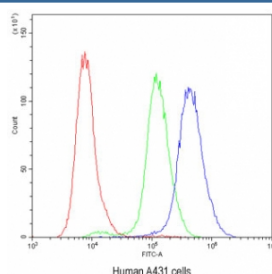
Catalog No.	Formulation	Size
R32029	0.5mg/ml if reconstituted with 0.2ml sterile DI water	100 ug

Bulk quote request

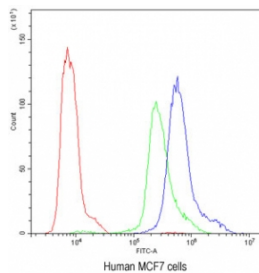
Availability	1-3 business days
Species Reactivity	Human
Format	Antigen affinity purified
Host	Rabbit
Clonality	Polyclonal (rabbit origin)
Isotype	Rabbit IgG
Purity	Antigen affinity
Buffer	Lyophilized from 1X PBS with 2.5% BSA and 0.025% sodium azide
UniProt	P24723
Localization	Cytoplasmic
Applications	Western Blot : 0.1-0.5ug/ml Flow Cytometry : 1-3ug/10 ⁶ cells
Limitations	This PKC eta antibody is available for research use only.



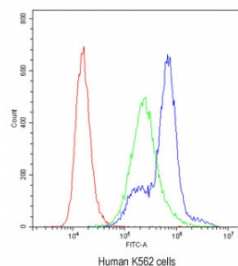
Western blot testing of human 1) A431, 2) A549, 3) HeLa and 4) SKOV lysate with PKC eta antibody. Predicted/observed molecular weight ~78 kDa.



Flow cytometry testing of human A431 cells with PKC eta antibody at 1ug/10⁶ cells (blocked with goat sera); Red=cells alone, Green=isotype control, Blue= PKC eta antibody.



Flow cytometry testing of human MCF7 cells with PKC eta antibody at $1\mu\text{g}/10^6$ cells (blocked with goat sera); Red=cells alone, Green=isotype control, Blue= PKC eta antibody.



Flow cytometry testing of human K562 cells with PKC eta antibody at $1\mu\text{g}/10^6$ cells (blocked with goat sera); Red=cells alone, Green=isotype control, Blue= PKC eta antibody.

Description

Protein kinase C eta (PRKCH) is a member of the novel PKC subfamily of serine/threonine kinases, activated by diacylglycerol but independent of calcium. PKC eta plays key roles in cell proliferation, differentiation, and survival, and is expressed in tissues such as skin, lung, and heart.

PKC eta is involved in signaling pathways that regulate keratinocyte differentiation, epithelial cell growth, and responses to stress. Dysregulation of PKC eta activity has been linked to cancer development, cardiovascular disease, and inflammatory conditions. Studying PKC eta provides insights into tissue-specific signaling and disease mechanisms.

Using a high-quality PKC eta antibody allows for reliable detection in applications such as western blot, immunohistochemistry, and immunoprecipitation. A PKC eta antibody from NSJ Bioreagents ensures sensitivity and reproducibility for research into signal transduction, cancer biology, and cell differentiation. Selecting the right PKC eta antibody is essential for accurate and consistent experimental results.

Application Notes

Optimal dilution of the PKC eta antibody should be determined by the researcher.

Immunogen

Amino acids 30-389 of human PKC eta were used as the immunogen for the PKC eta antibody.

Storage

After reconstitution, the PKC eta antibody can be stored for up to one month at 4°C . For long-term, aliquot and store at -20°C . Avoid repeated freezing and thawing.

