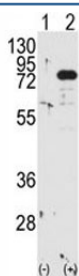


PKC beta Antibody (F50027)

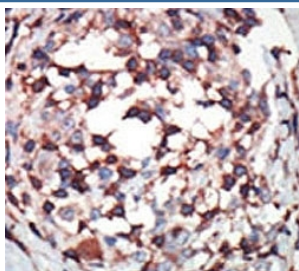
Catalog No.	Formulation	Size
F50027-0.4ML	In 1X PBS, pH 7.4, with 0.09% sodium azide	0.4 ml
F50027-0.08ML	In 1X PBS, pH 7.4, with 0.09% sodium azide	0.08 ml

[Bulk quote request](#)

Availability	1-3 business days
Species Reactivity	Human
Format	Purified
Host	Rabbit
Clonality	Polyclonal (rabbit origin)
Isotype	Rabbit Ig
Purity	Purified
UniProt	P05771
Applications	Western Blot : 1:1000 IHC (Paraffin) : 1:50-1:100
Limitations	This PKC beta antibody is available for research use only.



Western blot analysis of PKC beta antibody and 293 cell lysate either nontransfected (Lane 1) or transiently transfected with the PRKCB gene (2).



IHC analysis of FFPE human breast carcinoma tissue stained with the PKC beta antibody

Description

Protein kinase C (PKC) is a family of serine- and threonine-specific protein kinases that can be activated by calcium and second messenger diacylglycerol. PKC family members phosphorylate a wide variety of protein targets and are known to be involved in diverse cellular signaling pathways. PKC family members also serve as major receptors for phorbol esters, a class of tumor promoters. Each member of the PKC family has a specific expression profile and is believed to play a distinct role in cells. PKC beta is one of the PKC family members. This protein kinase has been reported to be involved in many different cellular functions, such as B cell activation, apoptosis induction, endothelial cell proliferation, and intestinal sugar absorption. Studies in mice also suggest that this kinase may also regulate neuronal functions and correlate fear-induced conflict behavior after stress. Alternatively spliced transcript variants encoding distinct isoforms have been reported. Isoform 1 uses an alternate exon at the 3' end compared to isoform 2, which includes a part of the coding region. The resulting isoform 1 has a distinct and shorter C-terminus, as compared to isoform 2.

Application Notes

Titration of the PKC beta antibody may be required due to differences in protocols and secondary/substrate sensitivity.

Immunogen

A portion of amino acids 303-334 from the human protein was used as the immunogen for this PKC beta antibody.

Storage

Aliquot the PKC beta antibody and store frozen at -20oC or colder. Avoid repeated freeze-thaw cycles.