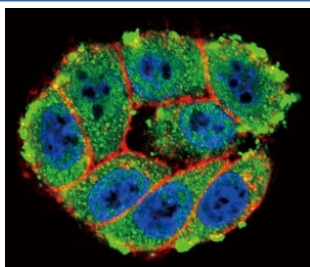


PKC alpha Antibody (F50026)

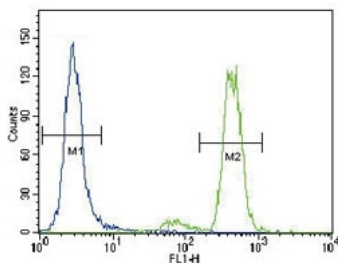
| Catalog No. | Formulation | Size |
|---------------|--|---------|
| F50026-0.4ML | In 1X PBS, pH 7.4, with 0.09% sodium azide | 0.4 ml |
| F50026-0.08ML | In 1X PBS, pH 7.4, with 0.09% sodium azide | 0.08 ml |

[Bulk quote request](#)

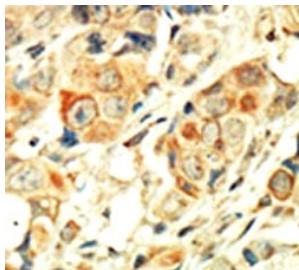
| | |
|-----------------------------|---|
| Availability | 1-3 business days |
| Species Reactivity | Human |
| Predicted Reactivity | Mouse, Rabbit, Rat |
| Format | Purified |
| Clonality | Polyclonal (rabbit origin) |
| Isotype | Rabbit Ig |
| Purity | Purified |
| UniProt | P17252 |
| Applications | Immunofluorescence : 1:10-1:50 Flow Cytometry : 1:10-1:50 Western Blot : 1:1000 IHC (Paraffin) : 1:10-1:50 |
| Limitations | This PKC alpha antibody is available for research use only. |



Confocal immunofluorescent analysis of PKC alpha antibody with HeLa cells followed by Alexa Fluor 488-conjugated goat anti-rabbit IgG (green). Actin filaments have been labeled with Alexa Fluor 555 Phalloidin (red). DAPI was used as a nuclear counterstain (blue).



PKC alpha antibody flow cytometric analysis of HeLa cells (green) compared to a [negative control](#) (blue). FITC-conjugated goat-anti-rabbit secondary Ab was used for the analysis.



IHC analysis of FFPE human breast carcinoma tissue stained with the PKC alpha antibody



Western blot analysis of anti-PKC alpha antibody in placenta lysate

Description

Protein kinase C (PKC) is a family of serine- and threonine-specific protein kinases that can be activated by calcium and the second messenger diacylglycerol. PKC family members phosphorylate a wide variety of protein targets and are known to be involved in diverse cellular signaling pathways. PKC family members also serve as major receptors for phorbol esters, a class of tumor promoters. Each member of the PKC family has a specific expression profile and is believed to play a distinct role in cells. PKC alpha is one of the PKC family members. This kinase has been reported to play roles in many different cellular processes, such as cell adhesion, cell transformation, cell cycle checkpoint, and cell volume control. Knockout studies in mice suggest that this kinase may be a fundamental regulator of cardiac contractility and Ca^{2+} handling in myocytes.

Application Notes

Titration of the PKC alpha antibody may be required due to differences in protocols and secondary/substrate sensitivity.

Immunogen

A portion of amino acids 299-329 from the human protein was used as the immunogen for this PKC alpha antibody.

Storage

Aliquot the PKC alpha antibody and store frozen at -20°C or colder. Avoid repeated freeze-thaw cycles.

