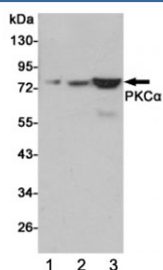


PKC alpha Antibody / aPKC [clone 3G11-G11-G11] (F54061)

Catalog No.	Formulation	Size
F54061-0.1ML	In PBS with 50% glycerol and 0.03% ProClin 300	0.1 ml

Bulk quote request

Availability	1-3 business days
Species Reactivity	Rat, Primate
Predicted Reactivity	Human
Format	Purified
Clonality	Monoclonal (mouse origin)
Isotype	Mouse IgG2a
Clone Name	3G11-G11-G11
Purity	Protein G affinity
UniProt	P17252
Applications	Western Blot : 1:1000
Limitations	This PKC alpha antibody is available for research use only.



Western blot testing of 1) human C2C12, 2) monkey COS7 and 3) rat C6 cell lysates using PKC alpha antibody at 1:1000. Predicted molecular weight ~77 kDa.

Description

This is a calcium-activated, phospholipid-dependent, serine- and threonine-specific enzyme. May play a role in cell motility by phosphorylating CSPG4. PKC is activated by diacylglycerol which in turn phosphorylates a range of cellular proteins. PKC also serves as the receptor for phorbol esters, a class of tumor promoters.

Application Notes

The stated application concentrations are suggested starting points. Titration of the PKC alpha antibody may be required

due to differences in protocols and secondary/substrate sensitivity.

Immunogen

A synthetic PKC alpha/aPKC peptide was used as the immunogen for the PKC alpha antibody.

Storage

Store the PKC alpha antibody at -20oC.