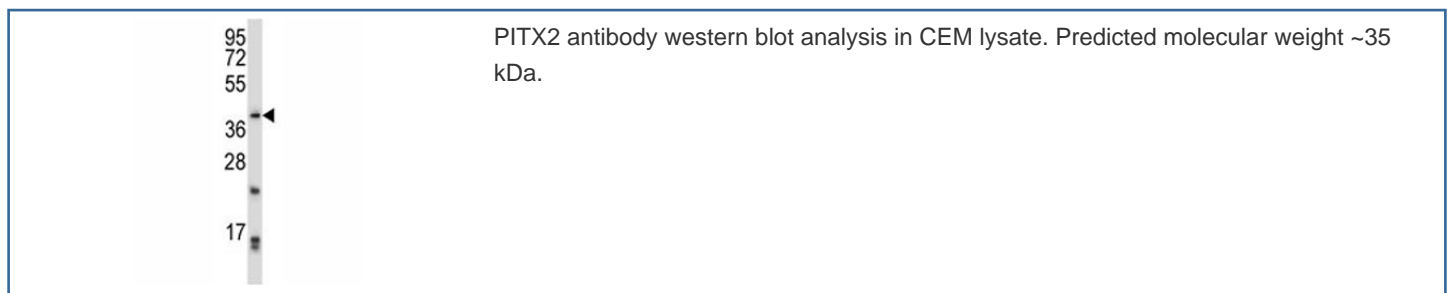


PITX2 Antibody / Pituitary homeobox 2 (F43443)

Catalog No.	Formulation	Size
F43443-0.4ML	In 1X PBS, pH 7.4, with 0.09% sodium azide	0.4 ml
F43443-0.08ML	In 1X PBS, pH 7.4, with 0.09% sodium azide	0.08 ml

[Bulk quote request](#)

Availability	1-3 business days
Species Reactivity	Human
Format	Antigen affinity purified
Host	Rabbit
Clonality	Polyclonal (rabbit origin)
Isotype	Rabbit Ig
Purity	Antigen affinity
UniProt	Q99697
Applications	Western Blot : 1:1000
Limitations	This PITX2 antibody is available for research use only.



Description

This gene encodes a member of the RIEG/PITX homeobox family, which is in the bicoid class of homeodomain proteins. The encoded protein acts as a transcription factor and regulates procollagen lysyl hydroxylase gene expression. This protein plays a role in the terminal differentiation of somatotroph and lactotroph cell phenotypes, is involved in the development of the eye, tooth and abdominal organs, and acts as a transcriptional regulator involved in basal and hormone-regulated activity of prolactin. Mutations in this gene are associated with Axenfeld-Rieger syndrome, iridogoniodysgenesis syndrome, and sporadic cases of Peters anomaly. A similar protein in other vertebrates is involved in the determination of left-right asymmetry during development. Alternatively spliced transcript variants encoding distinct

isoforms have been described.

Application Notes

Titration of the PITX2 antibody may be required due to differences in protocols and secondary/substrate sensitivity.

Immunogen

A portion of amino acids 42-71 from the human protein was used as the immunogen for this PITX2 antibody.

Storage

Aliquot the PITX2 antibody and store frozen at -20oC or colder. Avoid repeated freeze-thaw cycles.