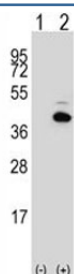


## PITX1 Antibody (F50319)

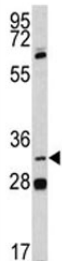
Catalog No.	Formulation	Size
F50319-0.4ML	In 1X PBS, pH 7.4, with 0.09% sodium azide	0.4 ml
F50319-0.08ML	In 1X PBS, pH 7.4, with 0.09% sodium azide	0.08 ml

[Bulk quote request](#)

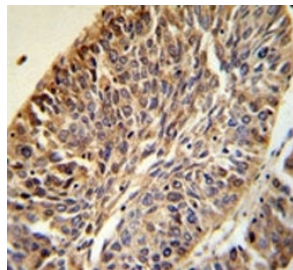
<b>Availability</b>	1-3 business days
<b>Species Reactivity</b>	Human
<b>Predicted Reactivity</b>	Mouse, Rat, Chicken, Zebrafish, Xenopus, Drosophila, C. elegans
<b>Format</b>	Purified
<b>Host</b>	Rabbit
<b>Clonality</b>	Polyclonal (rabbit origin)
<b>Isotype</b>	Rabbit Ig
<b>Purity</b>	Purified
<b>UniProt</b>	P78337
<b>Applications</b>	Western Blot : 1:1000 IHC (Paraffin) : 1:50-1:100 Flow Cytometry : 1:10-1:50
<b>Limitations</b>	This PITX1 antibody is available for research use only.



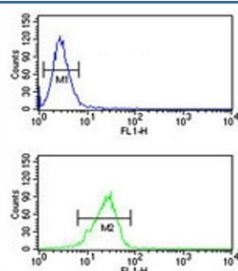
Western blot analysis of PITX1 antibody and 293 cell lysate either nontransfected (Lane 1) or transiently transfected (2) with the PITX1 gene. Predicted molecular weight ~34 kDa.



Western blot analysis of PITX1 antibody and NCI-H460 lysate. Predicted molecular weight ~34 kDa.



PITX1 antibody IHC analysis in formalin fixed and paraffin embedded human lung carcinoma.



PITX1 antibody flow cytometric analysis of NCI-H460 cells (green) compared to a [negative control](#) (blue). FITC-conjugated goat-anti-rabbit secondary Ab was used for the analysis.

## Description

PITX1 is a member of the RIEG/PITX homeobox family, which is in the bicoid class of homeodomain proteins. Members of this family are involved in organ development and left-right asymmetry. This protein acts as a transcriptional regulator involved in basal and hormone-regulated activity of prolactin.

## Application Notes

Titration of the PITX1 antibody may be required due to differences in protocols and secondary/substrate sensitivity.

## Immunogen

A portion of amino acids 123-150 from the human protein was used as the immunogen for this PITX1 antibody.

## Storage

Aliquot the PITX1 antibody and store frozen at -20°C or colder. Avoid repeated freeze-thaw cycles.