

## PIP5K1B Antibody (F40169)

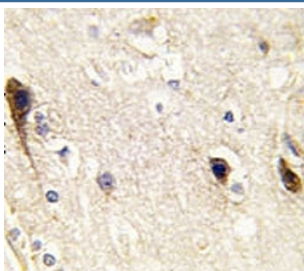
Catalog No.	Formulation	Size
F40169-0.4ML	In 1X PBS, pH 7.4, with 0.09% sodium azide	0.4 ml
F40169-0.08ML	In 1X PBS, pH 7.4, with 0.09% sodium azide	0.08 ml

[Bulk quote request](#)

<b>Availability</b>	1-3 business days
<b>Species Reactivity</b>	Human
<b>Format</b>	Purified
<b>Host</b>	Rabbit
<b>Clonality</b>	Polyclonal (rabbit origin)
<b>Isotype</b>	Rabbit Ig
<b>Purity</b>	Purified
<b>UniProt</b>	O14986
<b>Applications</b>	Western Blot : 1:1000 IHC (Paraffin) : 1:50-1:100
<b>Limitations</b>	This PIP5K1B antibody is available for research use only.

250  
150  
100  
75  
50  
37  
25  
20  
15

Western blot analysis of PIP5K1B antibody and human placenta cell lysate



IHC analysis of FFPE human brain tissue stained with PIP5K1B antibody

## Description

Protein kinases are enzymes that transfer a phosphate group from a phosphate donor, generally the  $\gamma$  phosphate of ATP, onto an acceptor amino acid in a substrate protein. By this basic mechanism, protein kinases mediate most of the signal transduction in eukaryotic cells, regulating cellular metabolism, transcription, cell cycle progression, cytoskeletal rearrangement and cell movement, apoptosis, and differentiation. With more than 500 gene products, the protein kinase family is one of the largest families of proteins in eukaryotes. The family has been classified in 8 major groups based on sequence comparison of their tyrosine (PTK) or serine/threonine (STK) kinase catalytic domains.

## Application Notes

Titration of the PIP5K1B antibody may be required due to differences in protocols and secondary/substrate sensitivity.

## Immunogen

A portion of amino acids 1-30 from the human protein was used as the immunogen for this PIP5K1B antibody.

## Storage

Aliquot the PIP5K1B antibody and store frozen at  $-20^{\circ}\text{C}$  or colder. Avoid repeated freeze-thaw cycles.