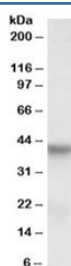


PINX1 Antibody (R34008)

Catalog No.	Formulation	Size
R34008-100UG	0.5 mg/ml in 1X TBS, pH7.3, with 0.5% BSA (US sourced) and 0.02% sodium azide	100 ug

[Bulk quote request](#)

Availability	1-3 business days
Species Reactivity	Human
Format	Antigen affinity purified
Clonality	Polyclonal (goat origin)
Isotype	Goat Ig
Purity	Antigen affinity
Gene ID	54984
Applications	Western Blot : 0.3-1ug/ml ELISA (peptide) LOD : 1:16000
Limitations	This PINX1 antibody is available for research use only.



Western blot testing of HepG2 lysate with PINX1 antibody at 0.3ug/ml. Predicted molecular weight: ~37kDa.

Description

Additional name(s) for this target protein: PIN2-interacting protein 1, Pin2-interacting protein X1

Application Notes

Optimal dilution of the PINX1 antibody should be determined by the researcher.

Immunogen

Amino acids ESYLQPKAKRHTE were used as the immunogen for this PINX1 antibody.

Storage

Aliquot and store the PINX1 antibody at -20oC.