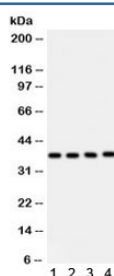


PINX1 Antibody (R32303)

Catalog No.	Formulation	Size
R32303	0.5mg/ml if reconstituted with 0.2ml sterile DI water	100 ug

[Bulk quote request](#)

Availability	1-3 business days
Species Reactivity	Human
Format	Antigen affinity purified
Host	Rabbit
Clonality	Polyclonal (rabbit origin)
Isotype	Rabbit IgG
Purity	Antigen affinity
Buffer	Lyophilized from 1X PBS with 2.5% BSA and 0.025% sodium azide
UniProt	Q96BK5
Applications	Western Blot : 0.1-0.5ug/ml
Limitations	This PINX1 antibody is available for research use only.



Western blot testing of 1) human placenta, 2) HeLa, 3) HUT and 4) Jurkat lysate with PINX1 antibody. Predicted/observed molecular weight ~37 kDa.

Description

PINX1, also known as PIN2 interacting protein 1, is a telomerase inhibitor and a possible tumor suppressor. It is mapped to 8p23. Over-expression of PINX1 results in decreased telomerase activity, telomere shortening, and induction of crisis. Reduction of PINX1 leads to an increase in telomerase activity and elongation of telomeres. PINX1 differs from other proteins that regulate telomere length in that it acts on telomerase while other proteins adjust telomere length without affecting telomerase activity. The PINX1 budding yeast orthologue Gnop1 inhibits telomerase by isolating the uncomplexed TERT protein so that it cannot associate with the telomerase template RNA, which prevents telomerase from being assembled. However, in humans, PINX1 impedes already assembled telomerase.

Application Notes

Optimal dilution of the PINX1 antibody should be determined by the researcher.

Immunogen

Amino acids DHIKVQVKNNHLGLGATINNEDNWIAHQDD of human PINX1 were used as the immunogen for the PINX1 antibody.

Storage

After reconstitution, the PINX1 antibody can be stored for up to one month at 4oC. For long-term, aliquot and store at -20oC. Avoid repeated freezing and thawing.