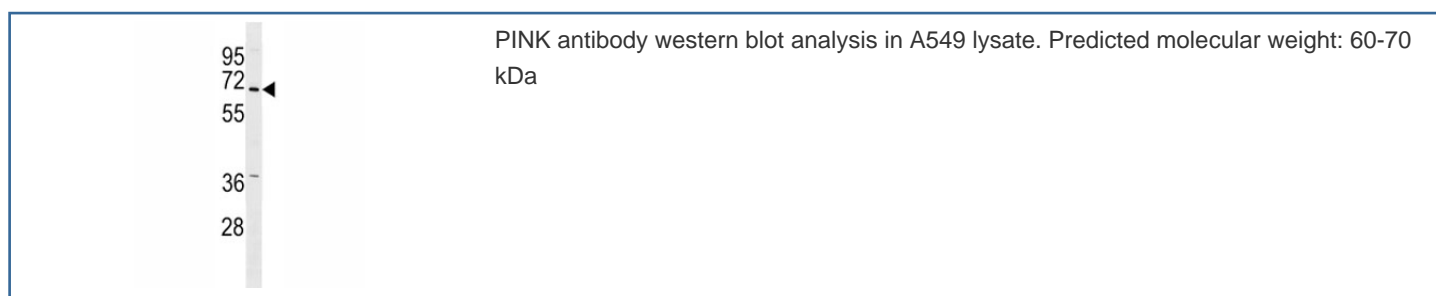


PINK Antibody (F49624)

Catalog No.	Formulation	Size
F49624-0.4ML	In 1X PBS, pH 7.4, with 0.09% sodium azide	0.4 ml
F49624-0.08ML	In 1X PBS, pH 7.4, with 0.09% sodium azide	0.08 ml

[Bulk quote request](#)

Availability	1-3 business days
Species Reactivity	Human, Mouse
Format	Purified
Host	Rabbit
Clonality	Polyclonal (rabbit origin)
Isotype	Rabbit Ig
Purity	Purified
UniProt	Q9BXM7
Applications	Western Blot : 1:1000
Limitations	This PINK antibody is available for research use only.



Description

Parkinson is the second most common neurodegenerative disease after Alzheimers. About 1 percent of people over the age of 65 and 3 percent of people over the age of 75 are affected by the disease. Defects in PINK1 are the cause of autosomal recessive early-onset Parkinson's disease 6 (PARK6). Strong evidence indicates that, although important in mendelian forms of Parkinson's disease (PD), PINK1 does not influence the cause of sporadic nonmendelian forms of PD.

Application Notes

Titration of the PINK antibody may be required due to differences in protocols and secondary/substrate sensitivity.

Immunogen

A portion of amino acids 237-266 from human PINK1 was used as the immunogen for this PINK antibody.

Storage

Aliquot the PINK antibody and store frozen at -20oC or colder. Avoid repeated freeze-thaw cycles.