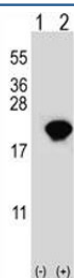


PIN1 Antibody (F51450)

Catalog No.	Formulation	Size
F51450-0.4ML	In 1X PBS, pH 7.4, with 0.09% sodium azide	0.4 ml
F51450-0.08ML	In 1X PBS, pH 7.4, with 0.09% sodium azide	0.08 ml

[Bulk quote request](#)

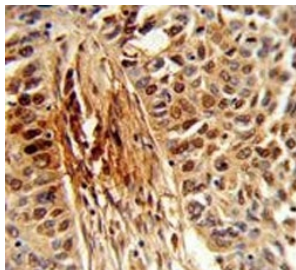
Availability	1-3 business days
Species Reactivity	Human
Predicted Reactivity	Primate
Format	Antigen affinity purified
Host	Rabbit
Clonality	Polyclonal (rabbit origin)
Isotype	Rabbit Ig
Purity	Antigen affinity
UniProt	Q13526
Applications	Western Blot : 1:1000 IHC (Paraffin) : 1:50-1:100 Flow Cytometry : 1:10-1:50 Immunofluorescence : 1:10-1:50
Limitations	This PIN1 antibody is available for research use only.



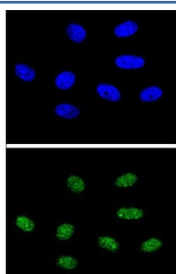
Western blot analysis of PIN1 antibody and 293 cell lysate either nontransfected (Lane 1) or transiently transfected (2) with the PIN1 gene. Expected molecular weight ~18kDa.



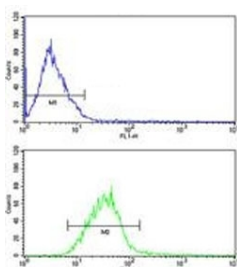
Western blot analysis of PIN1 antibody and HL-60 lysate



IHC analysis of FFPE human lung carcinoma stained with PIN1 antibody



Confocal immunofluorescent analysis of PIN1 antibody with 293 cells followed by Alexa Fluor 488-conjugated goat anti-rabbit IgG (green). DAPI was used as a nuclear counterstain (blue).



PIN1 antibody FACS analysis of MCF-7 cells (green) compared to a [negative control](#) (blue). FITC-conjugated goat-anti-rabbit secondary Ab was used for the analysis.

Description

PIN1 is an essential nuclear peptidylprolyl cis-trans isomerase (PPIase; EC 5.2.1.8) involved in regulation of mitosis.

Application Notes

Titration of the PIN1 antibody may be required due to differences in protocols and secondary/substrate sensitivity.

Immunogen

A portion of amino acids 30-56 from the human protein was used as the immunogen for this PIN1 antibody.

Storage

Aliquot the PIN1 antibody and store frozen at -20°C or colder. Avoid repeated freeze-thaw cycles.

