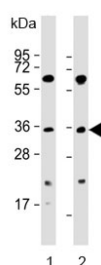


PIM2 Antibody (F54449)

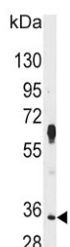
Catalog No.	Formulation	Size
F54449-0.4ML	In 1X PBS, pH 7.4, with 0.09% sodium azide	0.4 ml
F54449-0.08ML	In 1X PBS, pH 7.4, with 0.09% sodium azide	0.08 ml

[Bulk quote request](#)

Availability	1-3 business days
Species Reactivity	Human
Format	Purified
Host	Rabbit
Clonality	Polyclonal (rabbit origin)
Isotype	Rabbit Ig
Purity	SAS precipitation
UniProt	Q9P1W9
Localization	Cytoplasmic
Applications	Immunohistochemistry (FFPE) : 1:25 Western Blot : 1:500-1:2000
Limitations	This PIM2 antibody is available for research use only.



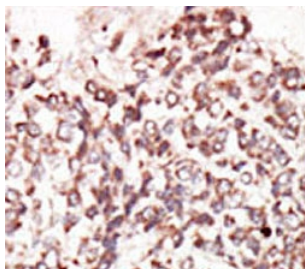
Western blot testing of human 1) K562 and 2) SW620 cell lysate with PIM2 antibody. Predicted molecular weight ~34 kDa.



Western blot testing of human HeLa cell lysate with PIM2 antibody. Predicted molecular weight ~34 kDa.



Western blot testing of 1) non-transfected and 2) transfected 293 cell lysate with PIM2 antibody.



IHC testing of FFPE human cancer tissue with PIM2 antibody. HIER: steam section in pH6 citrate buffer for 20 min and allow to cool prior to staining.

Description

Pim proteins (Pim-1, Pim-2 and Pim-3) are oncogene-encoded serine/threonine kinases. Pim-2 is highly homologous to Pim-1 with similar oncogenic functions. Pim-2 overexpression promotes resistance to a host of apoptotic stimuli; its expression is negatively regulated by growth factor depletion. Increased levels of Pim-2 has also been observed in certain cancers.

Application Notes

The stated application concentrations are suggested starting points. Titration of the PIM2 antibody may be required due to differences in protocols and secondary/substrate sensitivity.

Immunogen

A portion of amino acids 277-308 from the human protein was used as the immunogen for the PIM2 antibody.

Storage

Aliquot the PIM2 antibody and store frozen at -20oC or colder. Avoid repeated freeze-thaw cycles.