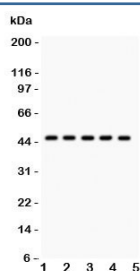


## PIM-1 Antibody (R31728)

Catalog No.	Formulation	Size
R31728	0.5mg/ml if reconstituted with 0.2ml sterile DI water	100 ug

[Bulk quote request](#)

Availability	1-3 business days
Species Reactivity	Human
Format	Antigen affinity purified
Host	Rabbit
Clonality	Polyclonal (rabbit origin)
Isotype	Rabbit IgG
Purity	Antigen affinity
Buffer	Lyophilized from 1X PBS with 2.5% BSA and 0.025% sodium azide
Gene ID	5292
Applications	Western Blot : 0.5-1ug/ml
Limitations	This PIM1 antibody is available for research use only.



Western blot testing of PIM-1 antibody and human samples 1: U20S; 2: A549; 3: COLO320; 4: SW620; 5: Jurkat. Western blot testing of human Jurkat cell lysate with PIM1 antibody. Predicted molecular weight ~44 kDa (PIM-1L) and ~34 kDa (PIM-1S).

## Description

Proto-oncogene serine/threonine-protein kinase PIM-1 is an enzyme that in humans is encoded by the PIM1 gene. It is mapped to 6p21.2. Primarily expressed in spleen, thymus, bone marrow, prostate, oral epithelial, hippocampus and fetal liver cells, It has also been found to be highly expressed in cell cultures isolated from human tumors. PIM-1 is mainly involved in cell cycle progression, apoptosis and transcriptional activation, as well as more general signal transduction pathways. It has been found a physiologic role of the PIM-1 oncogene during hematopoietic development and a deregulation of the gene in various leukemias. It also has a role in cardioprotection downstream of AKT activation.

## Application Notes

The stated application concentrations are suggested starting amounts. Titration of the PIM-1 antibody may be required due to differences in protocols and secondary/substrate sensitivity.

## Immunogen

An amino acid sequence from the C-terminus of human PIM1 (EEIQNHPWMQDVLLPQETAEIHLHSLSPGPSK) was used as the immunogen for this PIM-1 antibody.

## Storage

After reconstitution, the PIM-1 antibody can be stored for up to one month at 4°C. For long-term, aliquot and store at -20°C. Avoid repeated freezing and thawing.