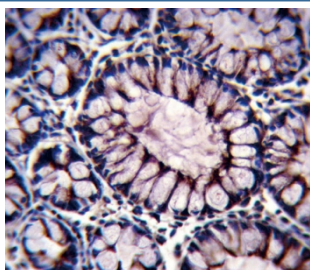


PIGR Antibody (F54456)

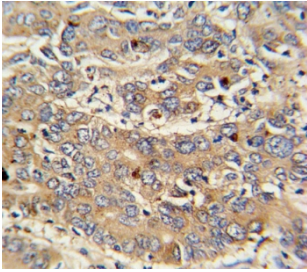
| Catalog No. | Formulation | Size |
|---------------|--|---------|
| F54456-0.4ML | In 1X PBS, pH 7.4, with 0.09% sodium azide | 0.4 ml |
| F54456-0.08ML | In 1X PBS, pH 7.4, with 0.09% sodium azide | 0.08 ml |

[Bulk quote request](#)

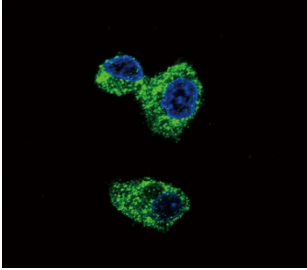
| | |
|---------------------------|---|
| Availability | 1-3 business days |
| Species Reactivity | Human |
| Format | Purified |
| Host | Rabbit |
| Clonality | Polyclonal (rabbit origin) |
| Isotype | Rabbit IgG |
| Purity | Antigen affinity purified |
| UniProt | P01833 |
| Applications | Flow Cytometry : 1:25 per million cells Immunofluorescence : 1:25 Immunohistochemistry (FFPE) : 1:25 Western Blot : 1:500-1:2000 |
| Limitations | This PIGR antibody is available for research use only. |



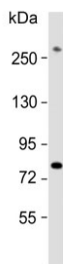
IHC testing of FFPE human colon tissue with PIGR antibody. HIER: steam section in pH6 citrate buffer for 20 min and allow to cool prior to staining.



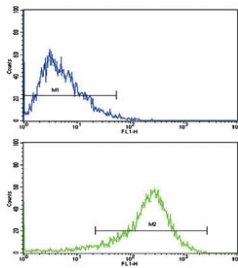
IHC testing of FFPE human hepatocarcinoma tissue with PIGR antibody. HIER: steam section in pH6 citrate buffer for 20 min and allow to cool prior to staining.



Immunofluorescent staining of human HepG2 cells with PIGR antibody (green) and DAPI nuclear stain (blue).



Western blot testing of human HepG2 cell lysate with PIGR antibody. Predicted molecular weight ~83 kDa.



Flow cytometry testing of human HepG2 cells with PIGR antibody; Blue=isotype control, Green= PIGR antibody.

Description

PIGR binds polymeric IgA and IgM at the basolateral surface of epithelial cells. The complex is then transported across the cell to be secreted at the apical surface. During this process a cleavage occurs that separates the extracellular (known as the secretory component) from the transmembrane segment.

Application Notes

The stated application concentrations are suggested starting points. Titration of the PIGR antibody may be required due to differences in protocols and secondary/substrate sensitivity.

Immunogen

A portion of amino acids 646-672 from the human protein was used as the immunogen for the PIGR antibody.

Storage

Aliquot the PIGR antibody and store frozen at -20oC or colder. Avoid repeated freeze-thaw cycles.

