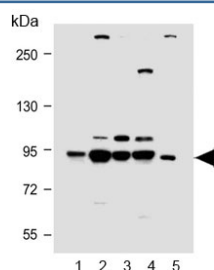


PI3KR1 Antibody (F54451)

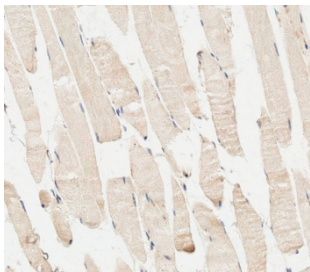
Catalog No.	Formulation	Size
F54451-0.4ML	In 1X PBS, pH 7.4, with 0.09% sodium azide	0.4 ml
F54451-0.08ML	In 1X PBS, pH 7.4, with 0.09% sodium azide	0.08 ml

[Bulk quote request](#)

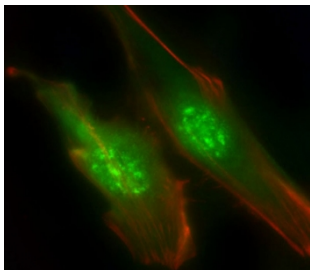
Availability	1-3 business days
Species Reactivity	Human, Rat
Format	Purified
Host	Rabbit
Clonality	Polyclonal (rabbit origin)
Isotype	Rabbit Ig
Purity	Antigen affinity purified
UniProt	P27986
Localization	Nuclear, cytoplasmic
Applications	Immunofluorescence : 1:25 Western Blot : 1:500-1:2000 Flow Cytometry : 1:25 (1x10 ⁶ cells) Immunohistochemistry (FFPE) : 1:25
Limitations	This PI3KR1 antibody is available for research use only.



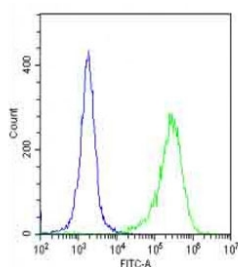
Western blot testing of human 1) A431, 2) Jurkat, 3) MCF7, 4) K562 and 5) rat brain lysate with PI3KR1 antibody. Predicted molecular weight ~84 kDa.



IHC testing of FFPE human skeletal muscle tissue with PI3KR1 antibody. HIER: steam section in pH6 citrate buffer for 20 min and allow to cool prior to staining.



Immunofluorescent staining of fixed and permeabilized human HeLa cells with PI3KR1 antibody (green), DAPI nuclear stain (blue) and anti-Actin (red).



Flow cytometry testing of fixed and permeabilized human HeLa cells with PI3KR1 antibody; Blue=isotype control, Green= PI3KR1 antibody.

Description

Phosphatidylinositol 3-kinase phosphorylates the inositol ring of phosphatidylinositol at the 3-prime position. The enzyme comprises a 110 kD catalytic subunit and a regulatory subunit of either 85, 55, or 50 kD. This gene encodes the 85 kD regulatory subunit. Phosphatidylinositol 3-kinase plays an important role in the metabolic actions of insulin, and a mutation in this gene has been associated with insulin resistance.

Application Notes

The stated application concentrations are suggested starting points. Titration of the PI3KR1 antibody may be required due to differences in protocols and secondary/substrate sensitivity.

Immunogen

A portion of amino acids 1-30 from the human protein was used as the immunogen for the PI3KR1 antibody.

Storage

Aliquot the PI3KR1 antibody and store frozen at -20oC or colder. Avoid repeated freeze-thaw cycles.

