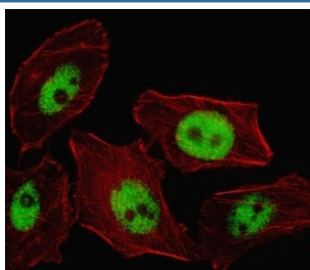


PHOX2B Antibody (F41391)

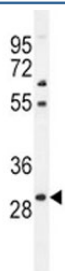
Catalog No.	Formulation	Size
F41391-0.4ML	In 1X PBS, pH 7.4, with 0.09% sodium azide	0.4 ml
F41391-0.08ML	In 1X PBS, pH 7.4, with 0.09% sodium azide	0.08 ml

[Bulk quote request](#)

Availability	1-3 business days
Species Reactivity	Mouse
Predicted Reactivity	Human, Rat
Format	Antigen affinity purified
Clonality	Polyclonal (rabbit origin)
Isotype	Rabbit Ig
Purity	Antigen affinity
UniProt	Q99453
Applications	Immunofluorescence : 1:10-1:50 Western Blot : 1:1000
Limitations	This PHOX2B antibody is available for research use only.



Fluorescent image of U251 cell stained with PHOX2B antibody. Alexa Fluor 488 conjugated secondary (green) was used. Cytoplasmic actin was counterstained with Alexa Fluor 555 (red) conjugated Phalloidin. PHOX2B immunoreactivity is localized to the nucleus.



PHOX2B antibody western blot analysis in mouse liver tissue lysate

Description

The DNA-associated protein encoded by this gene is a member of the paired family of homeobox proteins localized to the nucleus. The protein functions as a transcription factor involved in the development of several major noradrenergic neuron populations and the determination of neurotransmitter phenotype. The gene product is linked to enhancement of second messenger-mediated activation of the dopamine beta-hydroxylase, c-fos promoters and several enhancers, including cyclic amp-response element and serum-response element. [provided by RefSeq].

Application Notes

Titration of the PHOX2B antibody may be required due to differences in protocols and secondary/substrate sensitivity.

Immunogen

A portion of amino acids 104-130 from the human protein was used as the immunogen for this PHOX2B antibody.

Storage

Aliquot the PHOX2B antibody and store frozen at -20oC or colder. Avoid repeated freeze-thaw cycles.