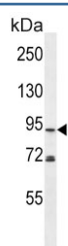


Phospholipase D2 Antibody / PLD2 (F54695)

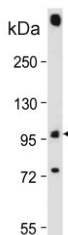
Catalog No.	Formulation	Size
F54695-0.4ML	In 1X PBS, pH 7.4, with 0.09% sodium azide	0.4 ml
F54695-0.08ML	In 1X PBS, pH 7.4, with 0.09% sodium azide	0.08 ml

[Bulk quote request](#)

Availability	1-3 business days
Species Reactivity	Human, Mouse
Format	Purified
Host	Rabbit
Clonality	Polyclonal (rabbit origin)
Isotype	Rabbit IgG
Purity	Antigen affinity purified
UniProt	O14939
Applications	Western Blot : 1:500-1:2000
Limitations	This Phospholipase D2 antibody is available for research use only.



Western blot testing of human MDA-MB-453 cell lysate with Phospholipase D2 antibody.
Predicted molecular weight ~106 kDa.



Western blot testing of mouse lung tissue lysate with Phospholipase D2 antibody.
Predicted molecular weight ~106 kDa.

kDa
250
130
95
72
55

Western blot testing of mouse bladder tissue lysate with Phospholipase D2 antibody.
Predicted molecular weight ~106 kDa.

Description

Phosphatidylcholine (PC)-specific phospholipases D (PLDs) catalyze the hydrolysis of PC to produce phosphatidic acid and choline. Activation of PC-specific PLDs occurs as a consequence of agonist stimulation of both tyrosine kinase and G protein-coupled receptors. PC-specific PLDs have been proposed to function in regulated secretion, cytoskeletal reorganization, transcriptional regulation, and cell cycle control.[OMIM]

Application Notes

The stated application concentrations are suggested starting points. Titration of the Phospholipase D2 antibody may be required due to differences in protocols and secondary/substrate sensitivity.

Immunogen

A portion of amino acids 10-39 from the human protein was used as the immunogen for the Phospholipase D2 antibody.

Storage

Aliquot the Phospholipase D2 antibody and store frozen at -20oC or colder. Avoid repeated freeze-thaw cycles.