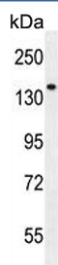


Phospholipase C-L2 Antibody / PLCL2 (F54629)

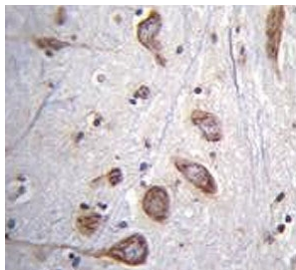
Catalog No.	Formulation	Size
F54629-0.4ML	In 1X PBS, pH 7.4, with 0.09% sodium azide	0.4 ml
F54629-0.08ML	In 1X PBS, pH 7.4, with 0.09% sodium azide	0.08 ml

[Bulk quote request](#)

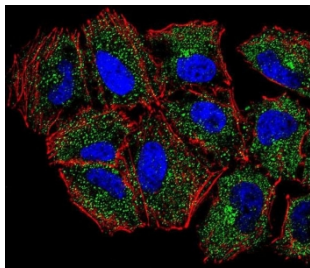
Availability	1-3 business days
Species Reactivity	Human
Format	Purified
Clonality	Polyclonal (rabbit origin)
Isotype	Rabbit Ig
Purity	Antigen affinity purified
UniProt	Q9UPR0
Localization	Cytoplasmic
Applications	Flow Cytometry : 1:10-1:50 (1x10 ⁶ cells) Immunofluorescence : 1:10-1:50 Immunohistochemistry (FFPE) : 1:10-1:50 Western Blot : 1:500-1:1000
Limitations	This Phospholipase C-L2 antibody is available for research use only.



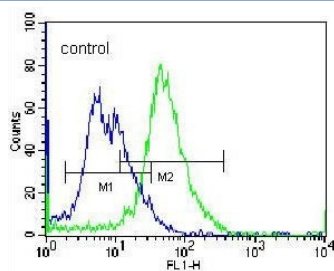
Western blot testing of human NCI-H460 cell lysate with Phospholipase C-L2 antibody.
Predicted molecular weight ~126 kDa.



IHC testing of FFPE human brain tissue with Phospholipase C-L2 antibody. HIER: steam section in pH6 citrate buffer for 20 min and allow to cool prior to staining.



Immunofluorescent staining of human NCI-H460 cells with Phospholipase C-L2 antibody (green), DAPI nuclear stain (blue) and anti-Actin (red).



Flow cytometry testing of human NCI-H460 cells with Phospholipase C-L2 antibody; Blue=isotype control, Green= Phospholipase C-L2 antibody.

Description

PLCL2 may play an role in the regulation of Ins(1,4,5)P3 around the endoplasmic reticulum [UniProt].

Application Notes

The stated application concentrations are suggested starting points. Titration of the Phospholipase C-L2 antibody may be required due to differences in protocols and secondary/substrate sensitivity.

Immunogen

A portion of amino acids 1099-1126 from the human protein was used as the immunogen for the Phospholipase C-L2 antibody.

Storage

Aliquot the Phospholipase C-L2 antibody and store frozen at -20oC or colder. Avoid repeated freeze-thaw cycles.