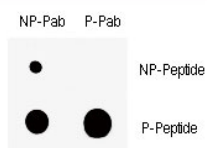


## Phospho-Wee1 Antibody (pS123) (F48463)

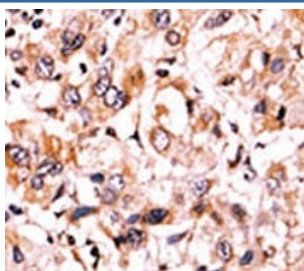
Catalog No.	Formulation	Size
F48463-0.4ML	In 1X PBS, pH 7.4, with 0.09% sodium azide	0.4 ml
F48463-0.08ML	In 1X PBS, pH 7.4, with 0.09% sodium azide	0.08 ml

[Bulk quote request](#)

<b>Availability</b>	1-3 business days
<b>Species Reactivity</b>	Human
<b>Format</b>	Antigen affinity purified
<b>Clonality</b>	Polyclonal (rabbit origin)
<b>Isotype</b>	Rabbit Ig
<b>Purity</b>	Antigen affinity
<b>UniProt</b>	P30291
<b>Applications</b>	Dot Blot : 1:500 IHC (Paraffin) : 1:50-1:100
<b>Limitations</b>	This phospho-Wee1 antibody is available for research use only.



Dot blot analysis of nonphos (NP) and phospho-Wee1 antibody (P). 50ng of phospho-peptide or nonphos-peptide per dot were spotted.



IHC analysis of FFPE human hepatocarcinoma tissue stained with the phospho-Wee1 antibody.

## Description

This gene encodes a nuclear protein, which is a tyrosine kinase belonging to the Ser/Thr family of protein kinases. This protein catalyzes the inhibitory tyrosine phosphorylation of CDC2/cyclin B kinase, and appears to coordinate the transition between DNA replication and mitosis by protecting the nucleus from cytoplasmically activated CDC2 kinase.

## Application Notes

Titration of the phospho-Wee1 antibody may be required due to differences in protocols and secondary/substrate sensitivity.

## Immunogen

This phospho-Wee1 antibody was produced from rabbits immunized with a KLH conjugated synthetic phosphopeptide corresponding to amino acid residues surrounding pS123 of human Wee1.

## Storage

Aliquot the phospho-Wee1 antibody and store frozen at -20oC or colder. Avoid repeated freeze-thaw cycles.