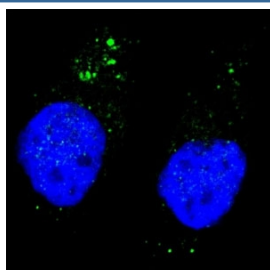


Phospho-ULK1 Antibody (pS556) (F48759)

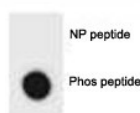
Catalog No.	Formulation	Size
F48759-0.4ML	In 1X PBS, pH 7.4, with 0.09% sodium azide	0.4 ml
F48759-0.08ML	In 1X PBS, pH 7.4, with 0.09% sodium azide	0.08 ml

[Bulk quote request](#)

Availability	1-3 business days
Species Reactivity	Human
Format	Antigen affinity purified
Host	Rabbit
Clonality	Polyclonal (rabbit origin)
Isotype	Rabbit Ig
Purity	Antigen affinity
UniProt	O75385
Applications	Immunofluorescence : 1:200 Dot Blot : 1:500
Limitations	This phospho-ULK1 antibody is available for research use only.



Fluorescent image of Chloroquine treated U251 cells stained with phospho-ULK1 antibody at 1:200. Immunoreactivity is localized to autophagic vacuoles in the cytoplasm.



Dot blot analysis of phospho-ULK1 antibody. 50ng of phos-peptide or nonphos-peptide per dot were spotted.

Description

Involved in autophagy. Required for autophagosome formation (By similarity). Target of the TOR kinase signaling pathway that regulates autophagy through the control of phosphorylation status of ATG13/KIAA0652 and ULK1, and the regulation of the ATG13-ULK1-RB1CC1 complex (By similarity). Phosphorylates ATG13/KIAA0652. Involved in axon growth (By similarity). Plays an essential role in neurite extension of cerebellar granule cells (By similarity). [UniProt]

Application Notes

Titration of the phospho-ULK1 antibody may be required due to differences in protocols and secondary/substrate sensitivity.

Immunogen

This phospho-ULK1 antibody was produced from rabbits immunized with a KLH conjugated synthetic phosphopeptide corresponding to amino acid residues surrounding pS556 of human ULK1.

Storage

Aliquot the phospho-ULK1 antibody and store frozen at -20oC or colder. Avoid repeated freeze-thaw cycles.