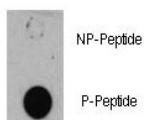


Phospho-TSC1 Antibody (pS505) (F48536)

Catalog No.	Formulation	Size
F48536-0.4ML	In 1X PBS, pH 7.4, with 0.09% sodium azide	0.4 ml
F48536-0.08ML	In 1X PBS, pH 7.4, with 0.09% sodium azide	0.08 ml

[Bulk quote request](#)

Availability	1-3 business days
Species Reactivity	Human
Predicted Reactivity	Mouse
Format	Antigen affinity purified
Clonality	Polyclonal (rabbit origin)
Isotype	Rabbit Ig
Purity	Antigen affinity
UniProt	Q92574
Applications	Dot Blot : 1:500
Limitations	This phospho-TSC1 antibody is available for research use only.



Dot blot analysis of phospho-TSC1 antibody. 50ng of phos-peptide or nonphos-peptide per dot were spotted.

Description

TSC1 is implicated as a tumor suppressor, and may have a function in vesicular transport. Interaction between TSC1 and TSC2 may facilitate vesicular docking. Defects in TSC1 are the cause of tuberous sclerosis complex (TSC). The molecular basis of TSC is a functional impairment of the hamartin-tuberin complex. TSC is an autosomal dominant multi-system disorder that affects especially the brain, kidneys, heart, and skin. Defects in TSC1 may be a cause of focal cortical dysplasia of Taylor balloon cell type (FCDBC). FCDBC is a subtype of cortical dysplasias linked to chronic intractable epilepsy. Cortical dysplasias display a broad spectrum of structural changes, which appear to result from changes in proliferation, migration, differentiation, and apoptosis of neuronal precursors and neurons during cortical

development.

Application Notes

Titration of the phospho-TSC1 antibody may be required due to differences in protocols and secondary/substrate sensitivity.

Immunogen

This phospho-TSC1 antibody was produced from rabbits immunized with a KLH conjugated synthetic phosphopeptide corresponding to amino acid residues surrounding pS505 of human TSC1.

Storage

Aliquot the phospho-TSC1 antibody and store frozen at -20oC or colder. Avoid repeated freeze-thaw cycles.