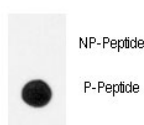


## Phospho-TrkA Antibody (pY791) (F48462)

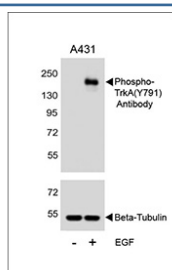
Catalog No.	Formulation	Size
F48462-0.4ML	In 1X PBS, pH 7.4, with 0.09% sodium azide	0.4 ml
F48462-0.08ML	In 1X PBS, pH 7.4, with 0.09% sodium azide	0.08 ml

[Bulk quote request](#)

<b>Availability</b>	1-3 business days
<b>Species Reactivity</b>	Human
<b>Format</b>	Antigen affinity purified
<b>Host</b>	Rabbit
<b>Clonality</b>	Polyclonal (rabbit origin)
<b>Isotype</b>	Rabbit Ig
<b>Purity</b>	Antigen affinity
<b>UniProt</b>	P04629
<b>Applications</b>	Dot Blot : 1:500 Western Blot : 1:500-1:1000
<b>Limitations</b>	This phospho-TrkA antibody is available for research use only.



Dot blot analysis of phospho-TrkA antibody. 50ng of phos-peptide or nonphos-peptide per dot were spotted.



Western blot testing of lysate from human A431 cells that were untreated (-) or treated (+) with 100 ng/ml of EGF, using Phospho-TrkA antibody and Beta-Tubulin antibody (loading control).

## Description

TrkA is a member of the neurotrophic tyrosine kinase receptor (NTKR) family. This kinase is a membrane-bound receptor that, upon neurotrophin binding, phosphorylates itself and members of the MAPK pathway. The presence of this kinase leads to cell differentiation and may play a role in specifying sensory neuron subtypes. Mutations in the TrkA gene have been associated with congenital insensitivity to pain, anhidrosis, self-mutilating behavior, mental retardation and cancer.

## Application Notes

Titration of the phospho-TrkA antibody may be required due to differences in protocols and secondary/substrate sensitivity.

## Immunogen

This phospho-TrkA antibody was produced from rabbits immunized with a KLH conjugated synthetic phosphopeptide corresponding to amino acid residues surrounding pY791 of human TrkA.

## Storage

Aliquot the phospho-TrkA antibody and store frozen at -20oC or colder. Avoid repeated freeze-thaw cycles.