

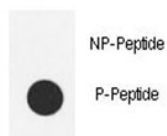
## Phospho-Src Antibody (pY419) (F48606)

Catalog No.	Formulation	Size
F48606-0.4ML	In 1X PBS, pH 7.4, with 0.09% sodium azide	0.4 ml
F48606-0.08ML	In 1X PBS, pH 7.4, with 0.09% sodium azide	0.08 ml

[Bulk quote request](#)

<b>Availability</b>	1-3 business days
<b>Species Reactivity</b>	Human
<b>Predicted Reactivity</b>	Bovine, Chicken, Mouse, Pig, Rat, Xenopus, Zebrafish
<b>Format</b>	Antigen affinity purified
<b>Clonality</b>	Polyclonal (rabbit origin)
<b>Isotype</b>	Rabbit Ig
<b>Purity</b>	Antigen affinity
<b>UniProt</b>	P12931
<b>Applications</b>	Dot Blot : 1:500
<b>Limitations</b>	This phospho-Src antibody is available for research use only.

Dot blot analysis of phospho-Src antibody. 50ng of phos-peptide or nonphos-peptide per dot were spotted.



## Description

This proto-oncogene may play a role in the regulation of embryonic development and cell growth. This protein is a tyrosine-protein kinase whose activity can be inhibited by phosphorylation by c-Src kinase.

## Application Notes

Titration of the phospho-Src antibody may be required due to differences in protocols and secondary/substrate sensitivity.

## Immunogen

This phospho-Src antibody was produced from rabbits immunized with a KLH conjugated synthetic phosphopeptide corresponding to amino acid residues surrounding pY419 of human Src.

## Storage

Aliquot the phospho-Src antibody and store frozen at -20oC or colder. Avoid repeated freeze-thaw cycles.