

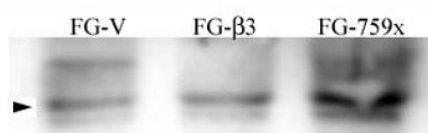
Phospho-Src Antibody (pY215) (F48452)

Catalog No.	Formulation	Size
F48452-0.4ML	In 1X PBS, pH 7.4, with 0.09% sodium azide	0.4 ml
F48452-0.08ML	In 1X PBS, pH 7.4, with 0.09% sodium azide	0.08 ml

[Bulk quote request](#)

Availability	1-3 business days
Species Reactivity	Human
Predicted Reactivity	Chicken, Mouse, Rat, Xenopus, Zebrafish
Format	Antigen affinity purified
Clonality	Polyclonal (rabbit origin)
Isotype	Rabbit Ig
Purity	Antigen affinity
UniProt	P12931
Applications	Western Blot : 1:1000
Limitations	This phospho-Src antibody is available for research use only.

FG pancreatic carcinoma cell lines stably expressing vector alone (FG-V), the b3 integrin subunit (FG-β3), or a b3 truncation mutant (FG-759x) probed with phospho-Src antibody. Ab was diluted 1:500.



Description

This gene is highly similar to the v-src gene of Rous sarcoma virus. This proto-oncogene may play a role in the regulation of embryonic development and cell growth. The protein encoded by this gene is a tyrosine-protein kinase whose activity can be inhibited by phosphorylation by c-Src kinase. Mutations in this gene could be involved in the malignant progression of colon cancer. Two transcript variants encoding the same protein have been found for this gene. Transcript Variant: This variant (1) represents the longer transcript. Both isoforms 1 and 2 encode the same protein.

Application Notes

Titration of the phospho-Src antibody may be required due to differences in protocols and secondary/substrate sensitivity.

Immunogen

This phospho-Src antibody was produced from rabbits immunized with a KLH conjugated synthetic phosphopeptide corresponding to amino acid residues surrounding pY215 of human Src.

Storage

Aliquot the phospho-Src antibody and store frozen at -20oC or colder. Avoid repeated freeze-thaw cycles.