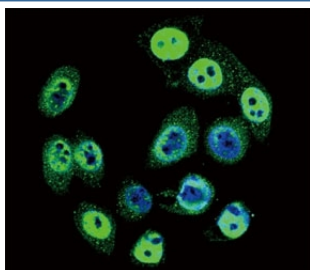


Phospho-SMAD4 Antibody (pT277) (F48451)

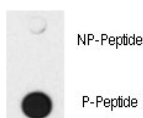
Catalog No.	Formulation	Size
F48451-0.4ML	In 1X PBS, pH 7.4, with 0.09% sodium azide	0.4 ml
F48451-0.08ML	In 1X PBS, pH 7.4, with 0.09% sodium azide	0.08 ml

[Bulk quote request](#)

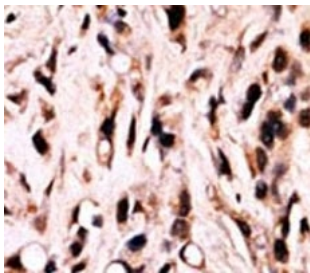
Availability	1-3 business days
Species Reactivity	Human
Predicted Reactivity	Mouse, Rat
Format	Antigen affinity purified
Clonality	Polyclonal (rabbit origin)
Isotype	Rabbit Ig
Purity	Antigen affinity
UniProt	Q13485
Applications	Immunofluorescence : 1:10-1:50 Dot Blot : 1:500 IHC (Paraffin) : 1:10-1:50
Limitations	This phospho-SMAD4 antibody is available for research use only.



Confocal immunofluorescent analysis of phospho-SMAD4 antibody with HeLa cells followed by Alexa Fluor 488-conjugated goat anti-rabbit IgG (green). DAPI was used as a nuclear counterstain (blue).



Dot blot analysis of phospho-SMAD4 antibody. 50ng of phos-peptide or nonphos-peptide per dot were spotted.



IHC analysis of FFPE breast carcinoma stained with phospho-SMAD4 antibody.

Description

Common mediator of signal transduction by TGF-beta (transforming growth factor) superfamily, SMAD4 is the common SMAD (co-SMAD). It promotes binding of the SMAD2/SMAD4/FAST-1 complex to DNA and provides an activation function required for SMAD1 or SMAD2 to stimulate transcription. It may act as a tumor suppressor.

Application Notes

Titration of the phospho-SMAD4 antibody may be required due to differences in protocols and secondary/substrate sensitivity.

Immunogen

This phospho-SMAD4 antibody was produced from rabbits immunized with a KLH conjugated synthetic phosphopeptide corresponding to amino acid residues surrounding pT277 of human SMAD4.

Storage

Aliquot the phospho-SMAD4 antibody and store frozen at -20oC or colder. Avoid repeated freeze-thaw cycles.