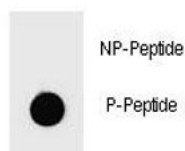


Phospho-PARP1 Antibody (pS864) (F48731)

Catalog No.	Formulation	Size
F48731-0.4ML	In 1X PBS, pH 7.4, with 0.09% sodium azide	0.4 ml
F48731-0.08ML	In 1X PBS, pH 7.4, with 0.09% sodium azide	0.08 ml

[Bulk quote request](#)

Availability	1-3 business days
Species Reactivity	Human
Predicted Reactivity	Bovine, Hamster, Mouse, Rat
Format	Antigen affinity purified
Clonality	Polyclonal (rabbit origin)
Isotype	Rabbit Ig
Purity	Antigen affinity
UniProt	P09874
Applications	Dot Blot : 1:500
Limitations	This phospho-PARP1 antibody is available for research use only.



Dot blot analysis of phospho-PARP1 antibody. 50ng of phos-peptide or nonphos-peptide per dot were spotted.

Description

This gene encodes a chromatin-associated enzyme, poly(ADP-ribosyl)transferase, which modifies various nuclear proteins by poly(ADP-ribosyl)ation. The modification is dependent on DNA and is involved in the regulation of various important cellular processes such as differentiation, proliferation, and tumor transformation and also in the regulation of the molecular events involved in the recovery of cell from DNA damage. In addition, this enzyme may be the site of mutation in Fanconi anemia, and may participate in the pathophysiology of type I diabetes.

Application Notes

Titration of the phospho-PARP1 antibody may be required due to differences in protocols and secondary/substrate sensitivity.

Immunogen

This phospho-PARP1 antibody was produced from rabbits immunized with a KLH conjugated synthetic phosphopeptide corresponding to amino acid residues surrounding pS864 of human PARP1.

Storage

Aliquot the phospho-PARP1 antibody and store frozen at -20oC or colder. Avoid repeated freeze-thaw cycles.