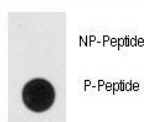


## Phospho-NSE Antibody (pY236) (F48585)

Catalog No.	Formulation	Size
F48585-0.4ML	In 1X PBS, pH 7.4, with 0.09% sodium azide	0.4 ml
F48585-0.08ML	In 1X PBS, pH 7.4, with 0.09% sodium azide	0.08 ml

[Bulk quote request](#)

<b>Availability</b>	1-3 business days
<b>Species Reactivity</b>	Human
<b>Predicted Reactivity</b>	Mouse, Rat
<b>Format</b>	Antigen affinity purified
<b>Clonality</b>	Polyclonal (rabbit origin)
<b>Isotype</b>	Rabbit Ig
<b>Purity</b>	Antigen affinity
<b>UniProt</b>	P09104
<b>Applications</b>	Dot Blot : 1:500
<b>Limitations</b>	This phospho-NSE antibody is available for research use only.



Dot blot analysis of phospho-NSE antibody. 50ng of phos-peptide or nonphos-peptide per dot were spotted.

## Description

NSE is one of the three enolase isoenzymes found in mammals. This isoenzyme, a homodimer, is found in mature neurons and cells of neuronal origin. A switch from alpha enolase to gamma enolase occurs in neural tissue during development in rats and primates.

## Application Notes

Titration of the phospho-NSE antibody may be required due to differences in protocols and secondary/substrate sensitivity.

## Immunogen

This phospho-NSE antibody was produced from rabbits immunized with a KLH conjugated synthetic phosphopeptide corresponding to amino acid residues surrounding pY236 of human NSE.

## Storage

Aliquot the phospho-NSE antibody and store frozen at -20oC or colder. Avoid repeated freeze-thaw cycles.