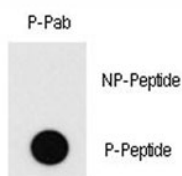


## Phospho-MEF2C Antibody (pT20) (F48481)

Catalog No.	Formulation	Size
F48481-0.4ML	In 1X PBS, pH 7.4, with 0.09% sodium azide	0.4 ml
F48481-0.08ML	In 1X PBS, pH 7.4, with 0.09% sodium azide	0.08 ml

[Bulk quote request](#)

<b>Availability</b>	1-3 business days
<b>Species Reactivity</b>	Human
<b>Predicted Reactivity</b>	Bovine, Chicken, Mouse, Pig, Rat, Xenopus
<b>Format</b>	Antigen affinity purified
<b>Host</b>	Rabbit
<b>Clonality</b>	Polyclonal (rabbit origin)
<b>Isotype</b>	Rabbit Ig
<b>Purity</b>	Antigen affinity
<b>UniProt</b>	Q06413
<b>Applications</b>	Dot Blot : 1:500
<b>Limitations</b>	This phospho-MEF2C antibody is available for research use only.



Dot blot analysis of phospho-MEF2C antibody. 50ng of phos-peptide or nonphos-peptide per dot were spotted.

### Description

MEF2C is a transcription activator which binds specifically to the MEF2 element present in the regulatory regions of many muscle-specific genes. This protein controls cardiac morphogenesis and myogenesis, and is also involved in vascular development. It may also be involved in neurogenesis and in the development of cortical architecture.

### Application Notes

Titration of the phospho-MEF2C antibody may be required due to differences in protocols and secondary/substrate sensitivity.

## **Immunogen**

This phospho-MEF2C antibody was produced from rabbits immunized with a KLH conjugated synthetic phosphopeptide corresponding to amino acid residues surrounding pT20 of human MEF2C.

## **Storage**

Aliquot the phospho-MEF2C antibody and store frozen at -20oC or colder. Avoid repeated freeze-thaw cycles.