

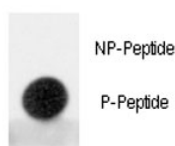
## Phospho-MDM2 Antibody (pS395) (F48579)

| Catalog No.   | Formulation                                | Size    |
|---------------|--|---------|
| F48579-0.4ML  | In 1X PBS, pH 7.4, with 0.09% sodium azide | 0.4 ml  |
| F48579-0.08ML | In 1X PBS, pH 7.4, with 0.09% sodium azide | 0.08 ml |

**Bulk quote request**

|                           |  |
|---------------------------|--|
| <b>Availability</b>       | 1-3 business days  |
| <b>Species Reactivity</b> | Human  |
| <b>Format</b>             | Antigen affinity purified                                      |
| <b>Clonality</b>          | Polyclonal (rabbit origin)                                     |
| <b>Isotype</b>            | Rabbit Ig  |
| <b>Purity</b>             | Antigen affinity   |
| <b>UniProt</b>            | Q00987   |
| <b>Applications</b>       | Dot Blot : 1:500   |
| <b>Limitations</b>        | This phospho-MDM2 antibody is available for research use only. |

Dot blot analysis of phospho-MDM2 antibody. 50ng of phos-peptide or nonphos-peptide per dot were spotted.



## Description

MDM2 is a target of the transcription factor tumor protein p53. This protein is a nuclear phosphoprotein that binds and inhibits transactivation by tumor protein p53, as part of an autoregulatory negative feedback loop. Overexpression of MDM2 can result in excessive inactivation of tumor protein p53, diminishing its tumor suppressor function. This protein has E3 ubiquitin ligase activity, which targets tumor protein p53 for proteasomal degradation. MDM2 also affects the cell cycle, apoptosis, and tumorigenesis through interactions with other proteins, including retinoblastoma 1 and ribosomal protein L5.

## Application Notes

Titration of the phospho-MDM2 antibody may be required due to differences in protocols and secondary/substrate sensitivity.

## Immunogen

This phospho-MDM2 antibody was produced from rabbits immunized with a KLH conjugated synthetic phosphopeptide corresponding to amino acid residues surrounding pS395 of human MDM2.

## Storage

Aliquot the phospho-MDM2 antibody and store frozen at -20oC or colder. Avoid repeated freeze-thaw cycles.