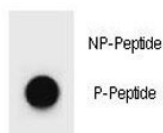


## Phospho-LC3A Antibody (pS12) (F48800)

Catalog No.	Formulation	Size
F48800-0.4ML	In 1X PBS, pH 7.4, with 0.09% sodium azide	0.4 ml
F48800-0.08ML	In 1X PBS, pH 7.4, with 0.09% sodium azide	0.08 ml

[Bulk quote request](#)

<b>Availability</b>	1-3 business days
<b>Species Reactivity</b>	Human
<b>Predicted Reactivity</b>	Bovine, Mouse, Rat
<b>Format</b>	Antigen affinity purified
<b>Host</b>	Rabbit
<b>Clonality</b>	Polyclonal (rabbit origin)
<b>Isotype</b>	Rabbit Ig
<b>Purity</b>	Antigen affinity
<b>UniProt</b>	Q9H492
<b>Applications</b>	Dot Blot : 1:500
<b>Limitations</b>	This phospho-LC3A antibody is available for research use only.



Dot blot analysis of phospho-LC3A antibody. 50ng of phos-peptide or nonphos-peptide per dot were spotted.

## Description

MAP1A and MAP1B are microtubule-associated proteins which mediate the physical interactions between microtubules and components of the cytoskeleton. MAP1A and MAP1B each consist of a heavy chain subunit and multiple light chain subunits. The protein encoded by this gene is one of the light chain subunits and can associate with either MAP1A or MAP1B. Two transcript variants encoding different isoforms have been found for this gene.

## Application Notes

Titration of the phospho-LC3A antibody may be required due to differences in protocols and secondary/substrate sensitivity.

## Immunogen

This phospho-LC3A antibody was produced from rabbits immunized with a KLH conjugated synthetic phosphopeptide corresponding to amino acid residues surrounding pS12 of human MAP1LC3A.

## Storage

Aliquot the phospho-LC3A antibody and store frozen at -20oC or colder. Avoid repeated freeze-thaw cycles.